

Educational & Institutional Capability



Office Locations:

North Queensland Office
457 Draper Street, Parramatta Park QLD 4870

Central Queensland Office
8 The Crescent, Agnes Water QLD 4677

Gold Coast Office
Level 13, 50 Cavill Avenue, Surfers Paradise
Postal Address: PO Box 5397, Cairns QLD 4870
T +61 7 4031 3993 E info@LA3.com.au

about us



*“ we aim to create significant and viable spaces,
with community and the entire life cycle in mind ”*

LA3 is a Queensland based local consultancy with landscape architecture, master planning and urban design professionals providing quality services for a diverse range of projects in Australia and Asia-Pacific. Now 12-years old, the LA3 business includes professionals with experience in the industry of more than 30-years. Our design approach is based on a detailed assessment of the natural systems of a given site and an understanding of the cultural heritage qualities of that place.

We provide creative, robust and strategic visions which result in innovative and practical site-responsive solutions. LA3 provides design services from concept through to detailed design and documentation, and supervision. We can lead the design process or support you in the documenting aspects of your design.

We can also prepare contemporary 2D and 3D visualisations. In providing these services, we aim to create significant and viable spaces, with the community and the entire life cycle in mind.

The LA3 Team advantage comes from its depth of experience in providing full suite of services including:

Landscape Architecture;
Master Planning;
Architecture;
Urban Design;
Planning;
Consultation;
Horticulture;
Visual Impact Assessment;
Design Management; and
Graphics and Visualisations.

Our approach enables our clients to achieve quality design outcomes on time and on budget above expectations. We have experience in a wide range of environments locally and globally and we understand the socio-cultural and environment uniqueness of each. We understand that our clients want the best value for money and we partner with them to achieve mutually beneficial results.

We manage sub-consultants including:

- Civil & Structural Engineering
- Geotechnical & Arborists
- Environmental Consultants
- Specialist lighting Design
- Artists & Community Art Projects

We can manage your contract providing advice on:

- Tendering & Award
- Quality Inspections
- Practical Completion
- Final Completion Certificates



Cairns State Highschool Quandrangle, Cairns , QLD - Designed by LA3

OUR PEOPLE

We are actively engaged in pushing the boundaries of design locally, putting our products at par with the rest of the world.

The LA3 team has undertaken projects of varying complexities both locally and overseas, and understands the importance of:

- Working collaboratively with clients to identify needs and develop project design and implementation strategies;
- Understanding the contextual and site opportunities and constraints, to develop a solid basis for future strategies;
- Formulating a vision for the future use and management of the facilities and open spaces.

OUR PHILOSOPHY

A strong client-stakeholder-designer partnership inspires us. We strongly believe that a collaborative method of working brings out the best outcomes for all our projects. We always work with our clients and stakeholders to provide robust design solutions that benefit everyone in the partnership in all circumstances.

OUR DIFFERENTIATORS

With numerous firms providing the same or similar set of services, LA3 must demonstrate its point of difference. Our commitment is to deliver premium service to our clients, strive to excel beyond our own limitations, improve upon our standards and continue setting high-standards. We take pride in sharing with you, a few of our differentiators:

- We are advocates of environmentally sustainable design and development;

- We value the inputs of others and we always practise a design approach collaboratively;
- We maintain a very reliable network and we partner with like-minded professionals depending on project requirements.
- We have a broad skill sets to manage a larger multidisciplinary team;
- With our global exposure, we have a great depth of combined individual experiences;
- We operate with a fresh philosophy.



Urban Design at the newly built Cairns Special School, Cairns QLD

key people



JOSEPH CORBIN

Managing Director, RLA AILA

Joseph is an AILA-Registered Landscape Architect with 30 years of professional experience in Northern Australia and Asia Pacific and 6 years in the Arabian Gulf. His long list of completed projects reflects his varied experience in design management, landscape architecture, urban design and landscape masterplanning.

He has a strong interest in the tropical Built Environment, place making, landscape and urban design. He enjoys co-design. He has managed large teams on landmark projects such as the Cardwell Foreshore Redevelopment. He was design manager of the significant Al Seef waterfront project for Aldar in Abu Dhabi in 2008 and the Doha Sports City in Qatar prior to that. He is currently designing Bargara Foreshore near Bundaberg.

He is based in Cairns as founding Director of LA3 and currently engaged in several important local projects including the Masterplanning of The Lake Eacham Visitor Facilities upgrade, Misson Beach Master plan and The Bellingen Main Street Redevelopment in NSW, and the Kuranda & Cardwell Cultural Precincts.

m: +61 410 773 772
e: Joseph@LA3.com.au



ANDREW PROWSE

Design Director, RLA AILA

Andrew has extensive landscape architectural experience in local community and tourism projects and has been responsible the design of many memorable landscapes in Port Douglas & Cairns. He was the Lead Landscape Architect for the Cairns Cultural Precinct (CPAC).

His design expertise has been recognised by many international, national and state awards including the Australia Council's inaugural Community Environment Art & Design Award for National Achievement in the Arts for the Gordonvale Townscape project. His projects have received several Australian Institute of Landscape Architect's Awards and his design for Munro Martin Parklands in Cairns new Entertainment Precinct won the AIA State Award for Urban Design & FNQ Project of the year Award. His work at the Reconciliation Rocks in Cooktown also won an AILA Award.

Andrew's strength is in connecting with the project team and stakeholders, the visioning of a project at the outset, and providing a unique and inspiring landscape character to a new developments.

m: +61 413 278 308
e: Andrew@LA3.com.au



JHAY BANIAGA

Senior Landscape Architect

Jhay is a Senior Landscape Architect with a wide range of professional experience locally and internationally working with LA3 for 7 years.

As well as leading the design documentation for the landmark Cardwell Foreshore project in Nth Qld, he has worked on all aspects of design for LA3 from sketch design to Detailed Design and documentation.

Jhay is familiar with Mossman and Port Douglas and the conditions of Far North Queensland, world tropics and has a keen interest in detailing of landscapes. He has skills in Master Planning and Public Consultation having worked as a facilitator. His solid experience in detailed documentation, conceptualisation and 3D visualisation demonstrates his skills as a talented designer.

t: +617 4031 3993
e: Jhay@LA3.com.au

project experience



CAIRNS PERFORMING ARTS CENTRE
Cairns, Queensland, Australia



project experience



BULMBA-JA ARTS CENTRE
Cairns, Queensland, Australia



project experience

TJAPUKAI THEATRE Smithfield, Queensland, Australia

Andrew Prowse designed the exterior areas of the refurbishment of the Tjapukai Theatre including the renovation of the outdoor theatre using local stone from Herberton and endemic plants. The story telling circles and cultural demonstration areas were also upgraded with new pathways and plantings.

Andrew worked with architect Hiromi Lauren on the design and location of the new covered walkways. Prior to the upgrade Andrew had worked on the original design concept for the new home of the Tjapukai Dance Theatre, when it relocated from Kuranda



project experience

CAIRNS SPECIAL SCHOOL Cairns, Queensland, Australia

The new Cairns Special School was delivered as a design construct package with Hutchinson Builders. Tasks included Design Development of the original concept, liaison with school staff and therapists, documentation and advice during construction. The school features 4 themed courtyards with stylised motifs of clown fish and turtles to give a distinct and colourful north Queensland identity. Play and exercise equipment was chosen for all abilities use and robustness in the tropical climate. Water play was integrated into the design and local endemic plants predominate.



project experience

CAIRNS STATE HIGH SCHOOL QUADRANGLE UPGRADE Cairns, Queensland, Australia

New building works at Cairns State High formed a new side to the school's quadrangle and the opportunity was taken to upgrade the quad to a more usable assembly and gathering space. While maintaining the formality of the space, seating groups were located around the perimeter, some under shade trees. The seating included bespoke cast concrete furniture designed for easy use by students in wheelchairs. Planting theme picked on the school's colours- blue and white



project experience



SANCTUARY EARLY LEARNING
Redlynch, Queensland, Australia



project experience

MACKILLOP LONG DAY CARE CENTRE (MLDCC) Cairns, Queensland, Australia

Adjacent to the growing suburb of Mt. Peter and the new Mackillop Catholic School the MLDCC caters for the children of families who need to commute to Cairns and beyond for work. LA3 was commissioned to design the outdoor spaces with the operator and the architects. The challenge like all new day care facilities is the limited outdoor spaces. Catering for all types of play and segregating of spaces for different age groups and for both active and passive play activities. The use of coloured concrete, mounding and screen plantings to the boundaries provided a compact but interesting and playful outcome at MLDCC.



project experience



MACKILLOP LONG DAY CARE CENTRE
Cairns, Queensland, Australia



project experience

LARAPINTA CHILD AND FAMILY CARE Larapinta, Alice Springs, NT

LA3 has been engaged as the Landscape Architect for the new Larapinta's Child and Family Care facility in Alice Springs. The design involved several considerations in respect to the indigenous community and existing child care centre. The design solutions included local plantings, materials and forms around a nature play theme. A central meeting space serves as a gathering area for children, staff and parents while spaces are divide into different age groups to facilitate safe, passive and active play. The entire landscape and entry areas has artwork installations, and waterplay is a dominant feature. LA3 provided concept through to detailed design and visited Alice Springs on several occasions.



project experience



LARAPINTA CHILD AND FAMILY CARE
Larapinta, Alice Springs, NT



project experience

JUST KIDS GORDONVALE Gordonvale, Queensland, Australia

Just Kids is a total makeover of an existing childcare centre with an outdated playground. A series of interactive play spaces with a naturalistic theme were developed in keeping with the natural materials chosen for the fit out by architect Nancy Lau. Play and learning opportunities include climbing and play on tree logs, an outdoor art space, water play and sand play. A variety of textures throughout and a multicolored pergola help stimulate interest in the outdoors.



project experience



JUST KIDS GORDONVALE
Gordonvale, Queensland, Australia



project experience



PELICANS CHILDCARE CENTRE
Cairns, Queensland, Australia



project experience

ST. ANDREWS CATHOLIC COLLEGE Cairns, Queensland, Australia

LA3 worked with the students and teachers of the Senior School at St. Andrew's to develop a shared vision for the new seniors courtyard adjacent the new General Learning Area and Study building. The design incorporates twin bespoke horseshoe seating areas set in a porphyry crazy paved surround. The courtyard is framed by buildings on 3 sides and a covered walk and link bridge with tropical planting edges, new courtyard trees and shade structures. The courtyard complements the new GLA being built between the exting senior classroom wings add will be well used by the students.

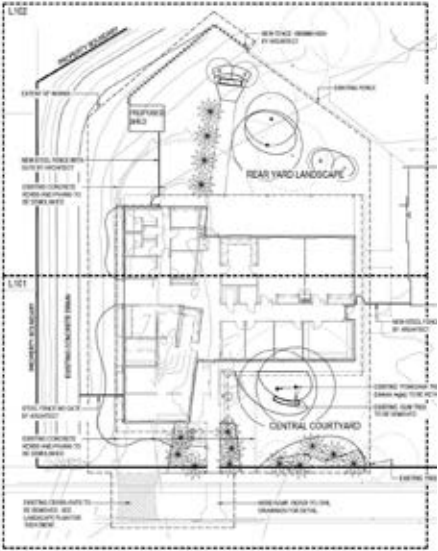


project experience



UPPER ROSS NEIGHBOURHOOD CENTRE Townsville, Qld

The new Neighbourhood Centre at Upper Ross was a simple yet rewarding outcome for LA3. The use of advanced size local *Livistona* species adjacent the pergola provided shade to the parking areas. Planting including vines planted on the pergola complied with CPTED requirements and the outcome was well balanced with open lawn areas and garden seating. A bike parking area was also included in the design.



project experience

DOUGLAS SHIRE COUNCIL COMMUNITY HALL Port Douglas, Queensland, Australia

The forecourt and landscape were designed to be integrated with a number of civic & community functions such as an amphitheatre ceremonial & meeting spaces. The hall is designed by Architect Roger Mainwood to open up & create merged indoor & outdoor spaces.



project experience

SMITHFIELD FIRE STATION Cairns, QLD

LA3 was engaged to design the landscape for new Smithfield Fire Station. This somewhat complex garden required the maintaining of sight-lines used during emergency departure. The challenge was to create a garden to soften the building located within residential areas and maintain a functional outcome. The site located on a corner has essentially 3no. egress points. LA3 located signage, fencing and flagpoles, pathways and designed the streetscapes.



project experience



SMITHFIELD FIRE STATION
Cairns, QLD



project experience

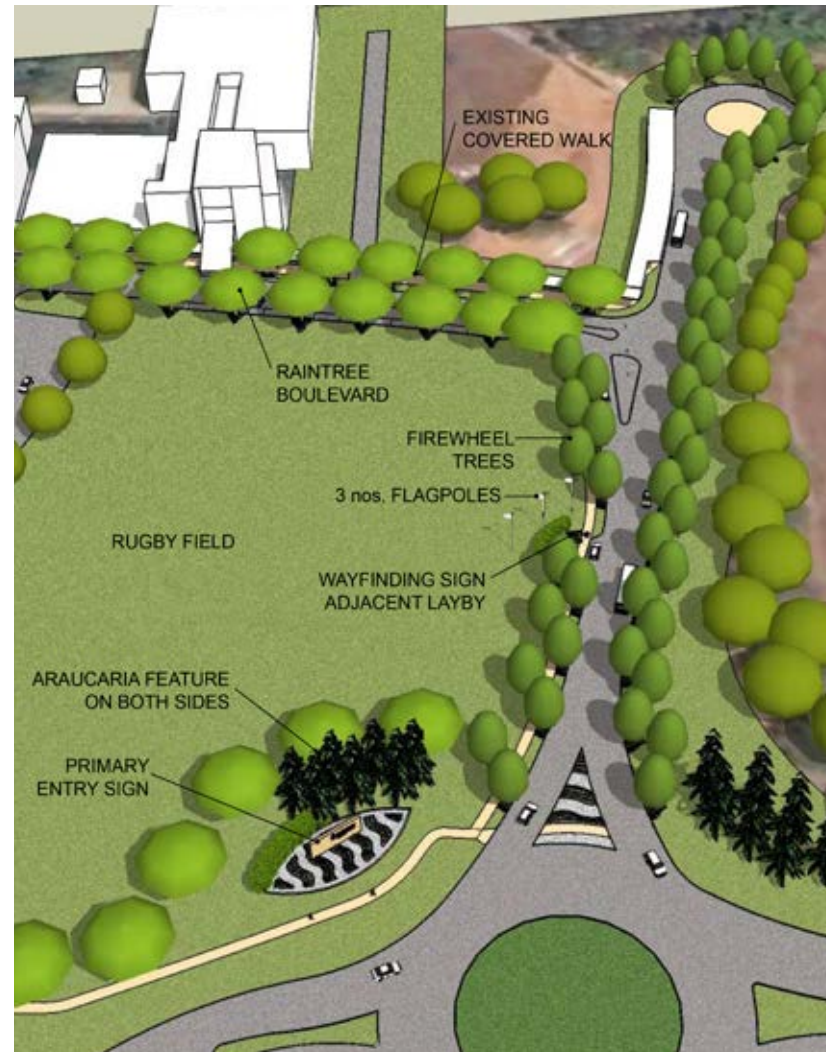
JAMES COOK UNIVERSITY ENTRANCES MASTERPLAN Cairns Campus, Queensland, Australia

LA3 recently worked with JCU Cairns Campus to develop landscape solutions for the enhancement of their internal road networks and entrances. A masterplan was developed that promotes contemporary forms and uses native plant selections throughout the campus.

The new designs include the two main entries, the major boulevards and features including the primary entry signs, wayfinding signs and flagpoles that are strategically located within the campus to maximise their function.

The LA3 design creates a welcoming and distinctive arrival experience for students and visitors alike, through the use of arching and flowering avenue trees, complemented with understory garden beds in modern shapes.

LA3 worked with the JCU team to optimise the design and ensure all stakeholders were satisfied with the outcome.



project experience

KURANDA COMMUNITY PRECINCT Kuranda Village, Queensland, Australia

LA3 worked with the Kuranda Community on the Master Plan for the Cultural Precinct which includes the conversion of the former State School to an amalgamation of current and future community facilities. The vision included catering for young and old users and future needs in the changing and challenging digital world besides the needs of the groups such as Artisans, Mens Shed, Library, Sports Community Garden and many other groups who wish to use the KCP in the future. The masterplan was well received and LA3 commended for their efforts in realising the communities joint vision.

[See the video here.](#)



project experience



KURANDA COMMUNITY PRECINCT
Kuranda Village, Queensland, Australia



project experience

CARDWELL CULTURAL PRECINCT Cardwell, Queensland, Australia

On the back of the successful Cardwell Foreshore Reconstruction project, LA3 was invited back by the community to prepare concepts for the Cardwell Cultural Precinct. Adjacent the existing Edmund Kennedy Memorial Plaza, a new flexible multi-use open space design was created by LA3 and the community which includes a large open lawn area, plaza space, a mini stage, mini amphitheatre, playground and pedestrian linkages to the school, foreshore, railway station and library.



project experience



CARDWELL CULTURAL PRECINCT
Cardwell, Queensland, Australia



project experience

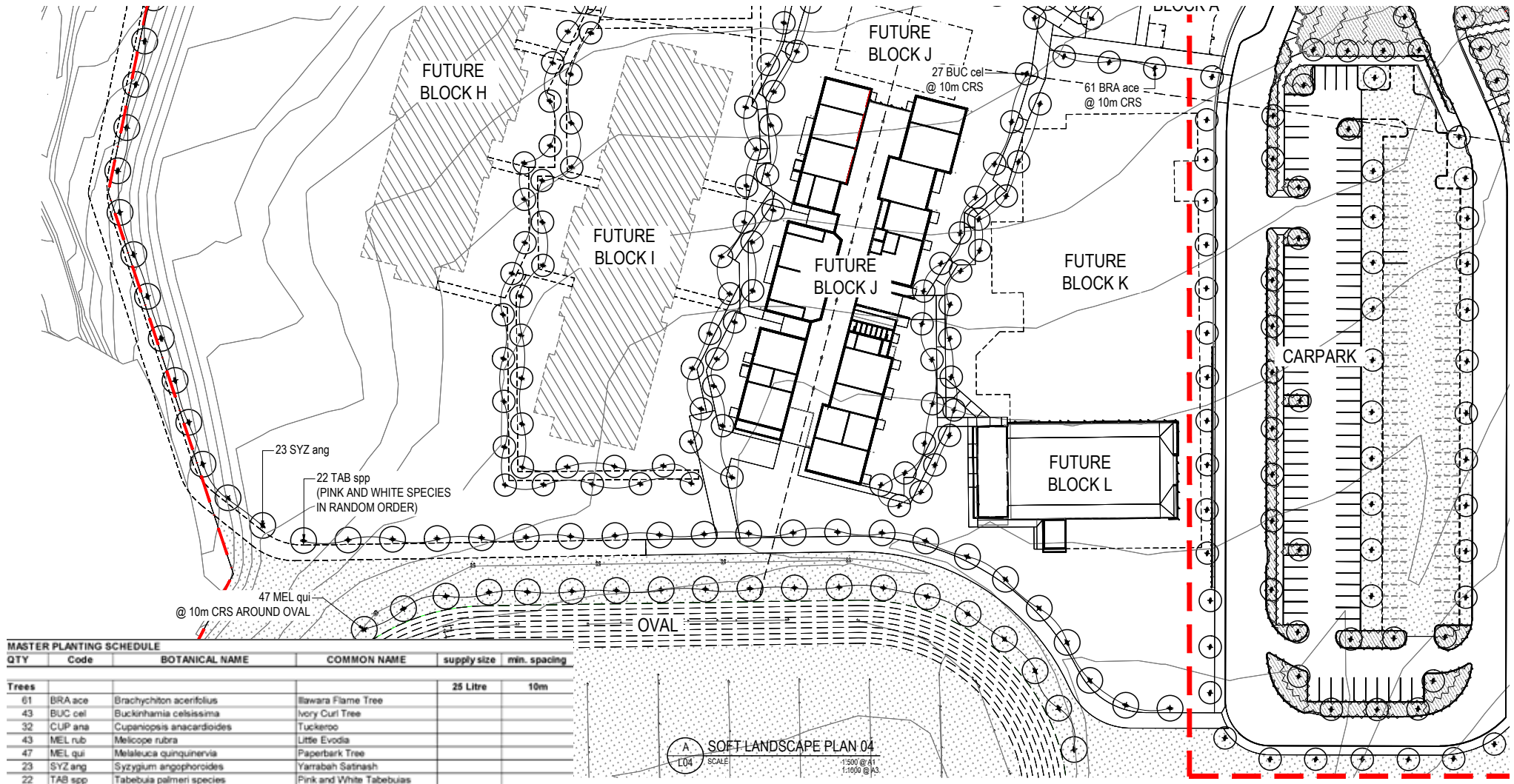
PIMLICO STATE HIGH SCHOOL Townsville, Queensland, Australia

LA3 was engaged to design the spaces adjacent and affected by the new Year 7 buildings at Pimlico SHS. This included protecting several existing trees and designing shade elements, soft fall surfaces, seating and undercroft screen and raised planting areas. LA3 developed subtle responses and several mini landscape rooms and in the areas within the brief. An organic shelter with leaf form and curvilinear seating walls helped define these spaces successfully.



project experience

MACKILLOP CATHOLIC COLLEGE
Cairns, Queensland, Australia



project experience

ROCKHAMPTON FIRE STATION Rockhampton, QLD

LA3 was engaged to provide design for the new Rockhampton Fire Station. The design aimed to soften the look and feel of the complex by providing greeneries, open break-out spaces and ample shade while maintaining clear sight-lines for emergency departure.



project experience

TOOMELAH COMMUNITY MULTI-PURPOSE FACILITY Toomelah, NSW

LA3 was engaged to provide design for the new Toomelah multi-functional Hall. The new facility at a remote indigenous community in NSW included ramping to the raised facility set above flood levels and a nature-play garden, mini amphitheatre, fire pit and carpark. The nature-play garden included local artist involvement and the creation of bespoke play elements and discovery, hide and seek areas. The ramping used to access the new Hall was used as the back of the Amphitheatre while additional screen plantings were used to block views to unsightly areas at the rear.





Office Locations:

North Queensland Office

457 Draper Street, Parramatta Park QLD 4870

Central Queensland Office

8 The Crescent, Agnes Water QLD 4677

Gold Coast Office

Level 13, 50 Cavill Avenue, Surfers Paradise

Postal Address: PO Box 5397, Cairns QLD 4870

T +61 7 4031 3993 E info@LA3.com.au