

## Indigenous & Islander Landscape Capability



### Office Locations:

**North Queensland Office**  
457 Draper Street, Parramatta Park QLD 4870

**Central Queensland Office**  
8 The Crescent, Agnes Water QLD 4677

**Gold Coast Office**  
Level 13, 50 Cavill Avenue, Surfers Paradise  
Postal Address: PO Box 5397, Cairns QLD 4870  
T +61 7 4031 3993 E [info@LA3.com.au](mailto:info@LA3.com.au)

# about us



*“ we aim to create significant and viable spaces,  
with community and the entire life cycle in mind ”*

LA3 is a Queensland based local consultancy with landscape architecture, master planning and urban design professionals providing quality services for a diverse range of projects in Australia and Asia-Pacific. Now 12-years old, the LA3 business includes professionals with experience in the industry of more than 30-years. Our design approach is based on a detailed assessment of the natural systems of a given site and an understanding of the cultural heritage qualities of that place.

We provide creative, robust and strategic visions which result in innovative and practical site-responsive solutions. LA3 provides design services from concept through to detailed design and documentation, and supervision. We can lead the design process or support you in the documenting aspects of your design.

We can also prepare contemporary 2D and 3D visualisations. In providing these services, we aim to create significant and viable spaces, with the community and the entire life cycle in mind.

The LA3 Team advantage comes from its depth of experience in providing full suite of services including:

Landscape Architecture;  
Master Planning;  
Architecture;  
Urban Design;  
Planning;  
Consultation;  
Horticulture;  
Visual Impact Assessment;  
Design Management; and  
Graphics and Visualisations.

Our approach enables our clients to achieve quality design outcomes on time and on budget above expectations. We have experience in a wide range of environments locally and globally and we understand the socio-cultural and environment uniqueness of each. We understand that our clients want the best value for money and we partner with them to achieve mutually beneficial results.

We manage sub-consultants including:

- Civil & Structural Engineering
- Geotechnical & Arborists
- Environmental Consultants
- Specialist lighting Design
- Artists & Community Art Projects

We can manage your contract providing advice on:

- Tendering & Award
- Quality Inspections
- Practical Completion
- Final Completion Certificates



*Reconciliation Rocks Commemoration Park, Cooktown, QLD - Designed by LA3 (2022 AILA QLD Award for Cultural Heritage)*



## OUR PEOPLE

We are actively engaged in pushing the boundaries of design locally, putting our products at par with the rest of the world.

The LA3 team has undertaken projects of varying complexities both locally and overseas, and understands the importance of:

- Working collaboratively with clients to identify needs and develop project design and implementation strategies;
- Understanding the contextual and site opportunities and constraints, to develop a solid basis for future strategies;
- Formulating a vision for the future use and management of the facilities and open spaces.

## OUR PHILOSOPHY

A strong client-stakeholder-designer partnership inspires us. We strongly believe that a collaborative method of working brings out the best outcomes for all our projects. We always work with our clients and stakeholders to provide robust design solutions that benefit everyone in the partnership in all circumstances.

## OUR DIFFERENTIATORS

With numerous firms providing the same or similar set of services, LA3 must demonstrate its point of difference. Our commitment is to deliver premium service to our clients, strive to excel beyond our own limitations, improve upon our standards and continue setting high-standards. We take pride in sharing with you, a few of our differentiators:

- We are advocates of environmentally sustainable design and development;

- We value the inputs of others and we always practise a design approach collaboratively;
- We maintain a very reliable network and we partner with like-minded professionals depending on project requirements.
- We have a broad skill sets to manage a larger multidisciplinary team;
- With our global exposure, we have a great depth of combined individual experiences;
- We operate with a fresh philosophy.



*Urban Design at the newly built CPAC, Cairns QLD*

# key people



## JOSEPH CORBIN

Managing Director, RLA AILA

Joseph is an AILA-Registered Landscape Architect with 30 years of professional experience in Northern Australia and Asia Pacific and 6 years in the Arabian Gulf. His long list of completed projects reflects his varied experience in design management, landscape architecture, urban design and landscape masterplanning.

He has a strong interest in the tropical Built Environment, place making, landscape and urban design. He enjoys co-design. He has managed large teams on landmark projects such as the Cardwell Foreshore Redevelopment. He was design manager of the significant Al Seef waterfront project for Aldar in Abu Dhabi in 2008 and the Doha Sports City in Qatar prior to that. He is currently designing Bargara Foreshore near Bundaberg.

He is based in Cairns as founding Director of LA3 and currently engaged in several important local projects including the Masterplanning of The Lake Eacham Visitor Facilities upgrade, Misson Beach Master plan and The Bellingen Main Street Redevelopment in NSW, and the Kuranda & Cardwell Cultural Precincts.

m: +61 410 773 772  
e: Joseph@LA3.com.au



## ANDREW PROWSE

Design Director, RLA AILA

Andrew has extensive landscape architectural experience in local community and tourism projects and has been responsible the design of many memorable landscapes in Port Douglas & Cairns. He was the Lead Landscape Architect for the Cairns Cultural Precinct (CPAC).

His design expertise has been recognised by many international, national and state awards including the Australia Council's inaugural Community Environment Art & Design Award for National Achievement in the Arts for the Gordonvale Townscape project. His projects have received several Australian Institute of Landscape Architect's Awards and his design for Munro Martin Parklands in Cairns new Entertainment Precinct won the AIA State Award for Urban Design & FNQ Project of the year Award. His work at the Reconciliation Rocks in Cooktown also won an AILA Award.

Andrew's strength is in connecting with the project team and stakeholders, the visioning of a project at the outset, and providing a unique and inspiring landscape character to a new developments.

m: +61 413 278 308  
e: Andrew@LA3.com.au



## JHAY BANIAGA

Senior Landscape Architect

Jhay is a Senior Landscape Architect with a wide range of professional experience locally and internationally working with LA3 for 7 years.

As well as leading the design documentation for the landmark Cardwell Foreshore project in Nth Qld, he has worked on all aspects of design for LA3 from sketch design to Detailed Design and documentation.

Jhay is familiar with Mossman and Port Douglas and the conditions of Far North Queensland, world tropics and has a keen interest in detailing of landscapes. He has skills in Master Planning and Public Consultation having worked as a facilitator. His solid experience in detailed documentation, conceptualisation and 3D visualisation demonstrates his skills as a talented designer.

t: +617 4031 3993  
e: Jhay@LA3.com.au



# project experience

## CARDWELL FORESHORE RECONSTRUCTION Cardwell, Queensland, Australia

LA3 has been engaged as Landscape Architects for the landmark project to redesign the 3.5km foreshore and the townscape at Cardwell in North Queensland. The project is the outcome of an extensive public consultation and vision process held in Cardwell in 2011, post TC Yasi. Having carefully facilitated this process, our Principal Landscape Architect, Joseph Corbin developed concept options with the community then developed those community driven solutions into an agreed overall masterplan and community vision for this unique northern Australian coastal township.

The township and foreshore was devastated by the category 5 tropical cyclone Yasi in February 2011. Many people lost not only their belongings but their livelihoods and many had no option but to leave Cardwell. The town is located on the Bruce Hwy adjacent the World Heritage listed Hinchinrook Island and channel. It is the only stop on the coast when travelling from Cairns to Townsville. Many hope that the new works will revitalise this seaside town and help regain the former character whilst bringing a new heart and soul to the town. The community's ongoing involvement will ensure that the outcome is unique and will hold considerable local ownership.

Budget: \$8m





# project experience



## CARDWELL FORESHORE RECONSTRUCTION Cardwell, Queensland, Australia





# project experience



## CARDWELL FORESHORE RECONSTRUCTION Cardwell, Queensland, Australia





# project experience

## YARRABAH JETTY

Yarrabah, Queensland, Australia

LA3 worked with the Department of Transport & Main Roads (TMR) and the Yarrabah community on the new jetty at Yarrabah. The jetty features built-in artwork of the local wildlife found in the jetty and Yarrabah vicinity. LA3 managed the implementation of artwork from assisting with the artist's engagement and the documentation of local artist Anthony Yeatman into several steel stencils used for the sandblasting the designs into the jetty pavement.

The jetty features a series of interpretation panels telling of the Yarrabah community's history, traditional stories behind the animal artworks and environmental information. LA3 managed the progression of the interpretation signage working closely with the TMR, local elders, rangers and graphic designers on the series of 10 interpretation signs.

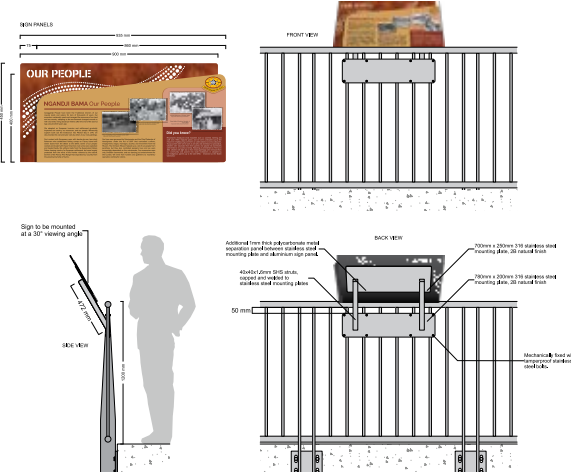
Budget: \$12m



# project experience



## YARRABAH JETTY Yarrabah, Queensland, Australia





# project experience

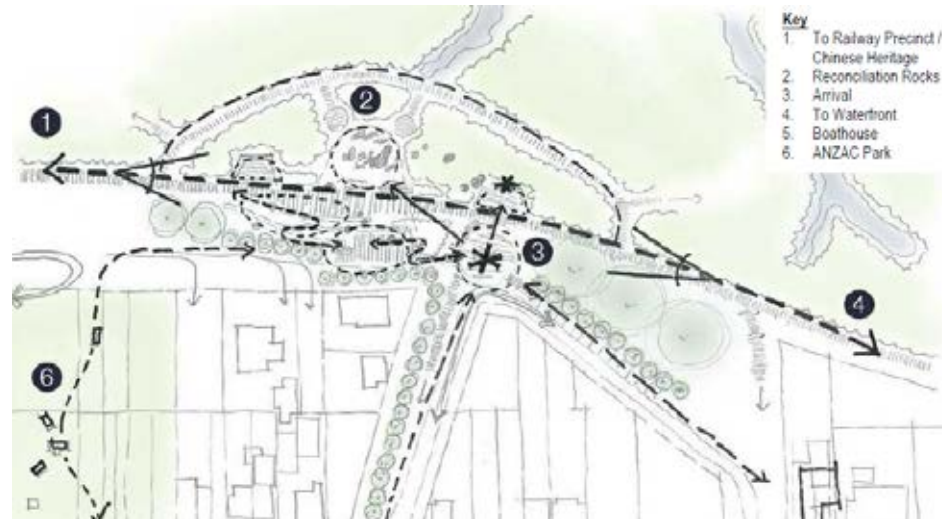
## RECONCILIATION ROCKS COMMEMORATION PARK (2022 AILA QLD Award for Cultural Heritage) Cooktown, Queensland, Australia

This Federally funded memorial park commemorates the site and the first act of reconciliation after a conflict in 1770 between the Cook expedition and traditional landowners on the foreshore of what is present day Cooktown. The reconciliation took place at a large outcrop of boulders, still present today, although divided into 2 sections by a 19th Century gold rush railway cut. LA3 provided the Landscape Architectural component of design, documentation, and construction of the Reconciliation Rocks project for Cook Shire Council.

The design utilises the former rail cut to install, off the embankment, a series of shallow cast concrete and grass terraces to create an informal amphitheatre overlooking the significant remaining boulders where reenactment of the event occurs annually.

LA3 worked closely with the project Architects, CA Architects and local artist Braham Stevens, Cook Shire Council, and various stakeholders, including the Guugu Yimithirr Elders & Bama-ngay Traditional Custodians of the White & Black Cockatoo Clans, to help bring their nationally significant, ancestral reconciliation story to life in a symbolic empowering way. Along with the boulders the two artworks are the heroes of the project, one of the two clan cockatoo feathers, the other a portrait of the peace making elder.

The project, while delayed due to Covid 2020 Restrictions, was designed and delivered within budget for the rescheduled opening in June 2021.





# project experience

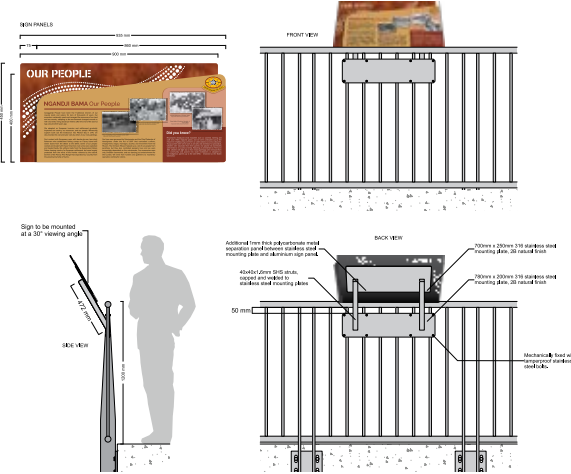
RECONCILIATION ROCKS COMMEMORATION PARK (2022 AILA QLD Award for Cultural Heritage)  
Cooktown, Queensland, Australia



# project experience



YARRABAH JETTY  
Yarrabah, Queensland, Australia





# project experience



CAIRNS PERFORMING ARTS CENTRE  
Cairns, Queensland, Australia





# project experience



BULMBA-JA ARTS CENTRE  
Cairns, Queensland, Australia





# project experience

## TJAPUKAI THEATRE Smithfield, Queensland, Australia

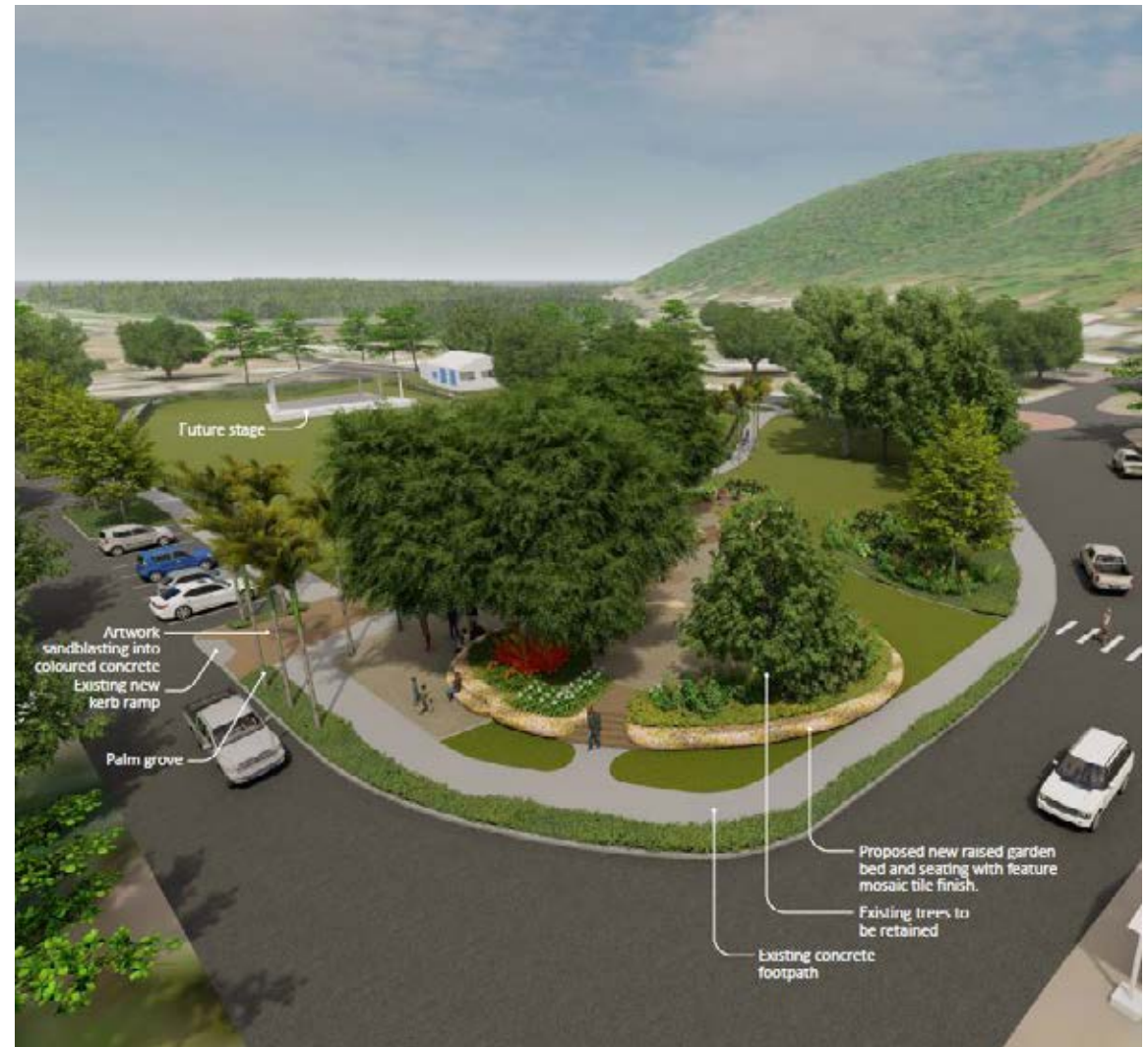
Andrew Prowse designed the exterior areas of the refurbishment of the Tjapukai Theatre including the renovation of the outdoor theatre using local stone from Herberton and endemic plants. The story telling circles and cultural demonstration areas were also upgraded with new pathways and plantings.

Andrew worked with architect Hiromi Lauren on the design and location of the new covered walkways. Prior to the upgrade Andrew had worked on the original design concept for the new home of the Tjapukai Dance Theatre, when it relocated from Kuranda



# project experience

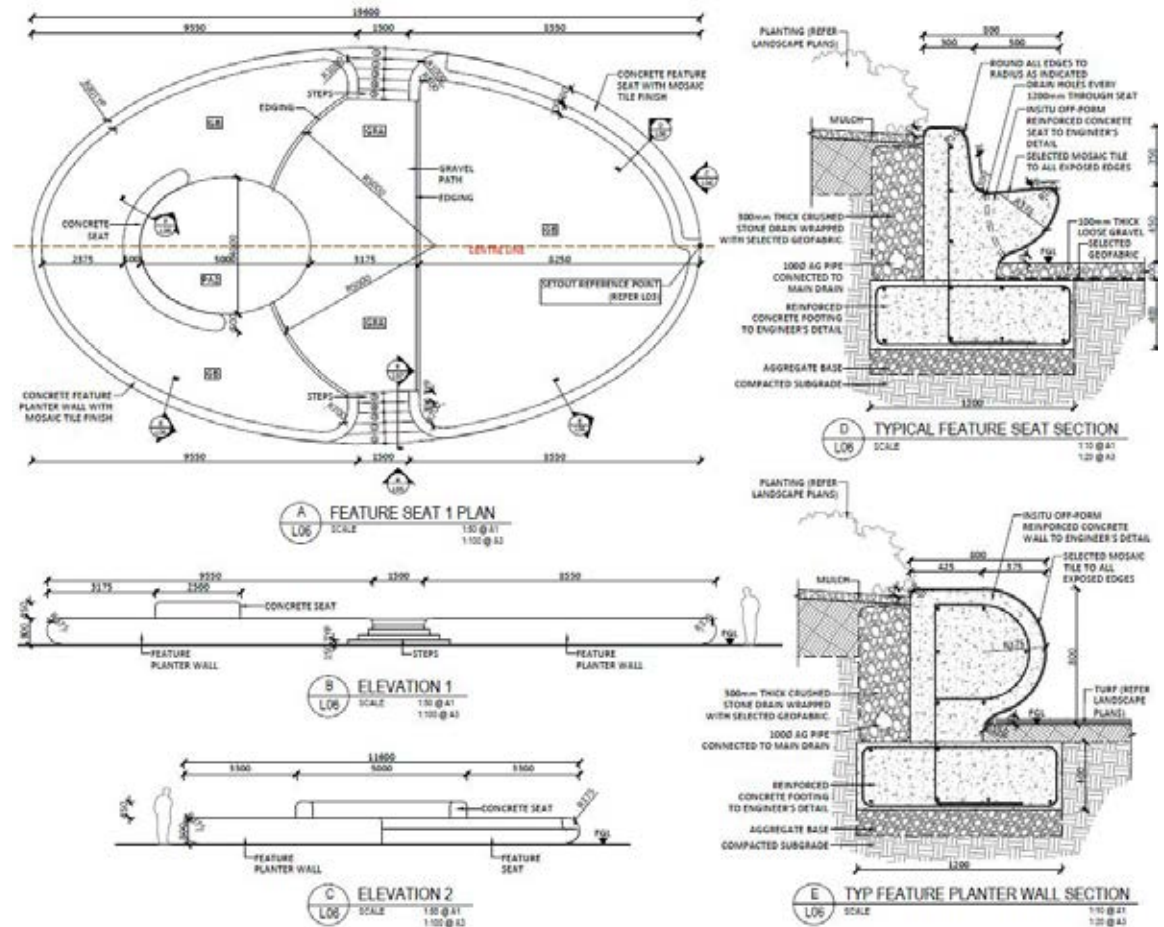
## BISHOP MALCOLM PARK Yarrabah, Queensland, Australia





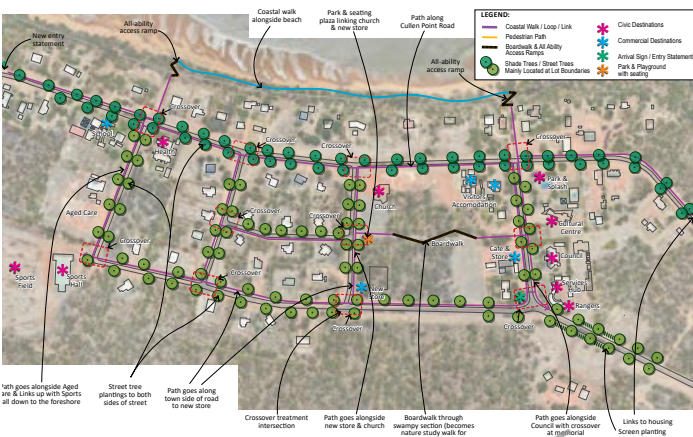
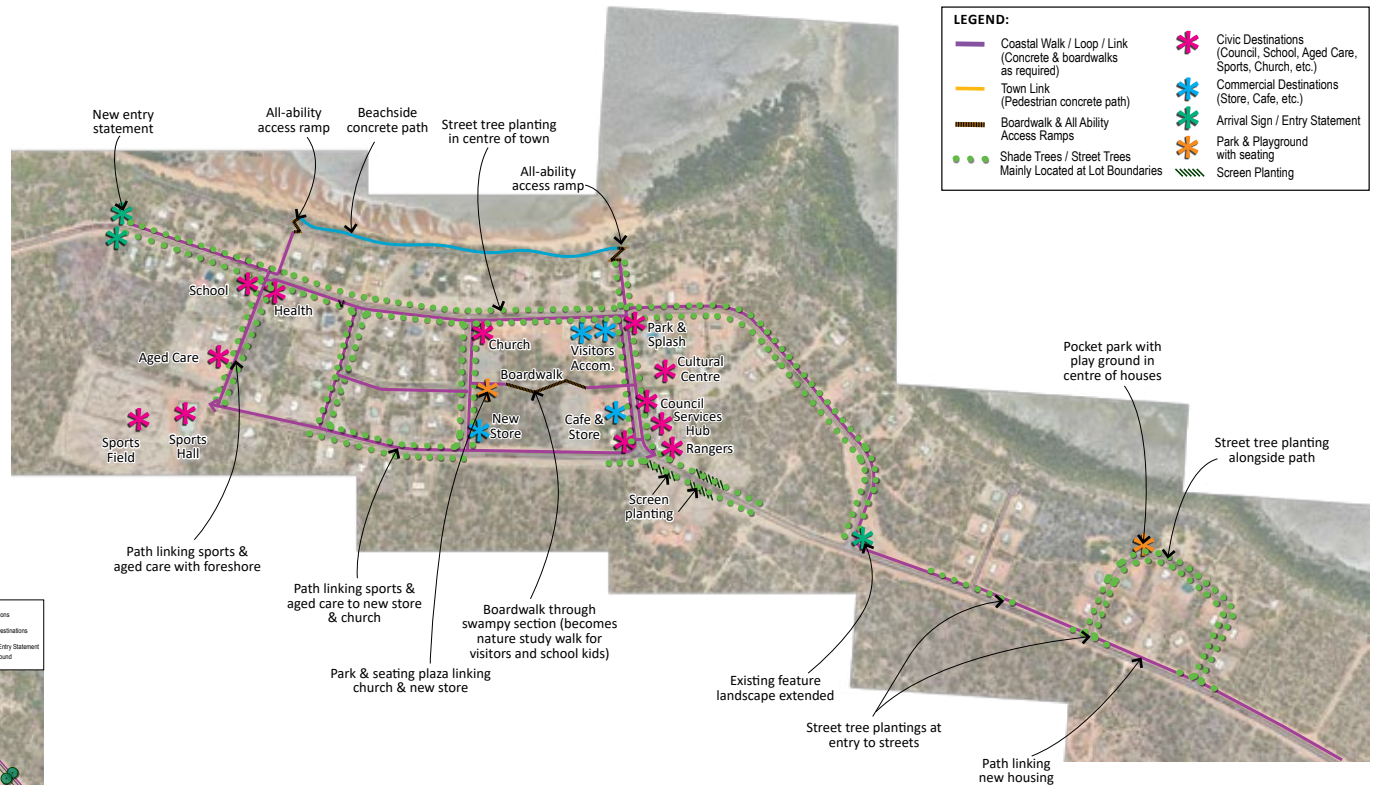
# project experience

BISHOP MALCOLM PARK  
Yarrabah, Queensland, Australia



# project experience

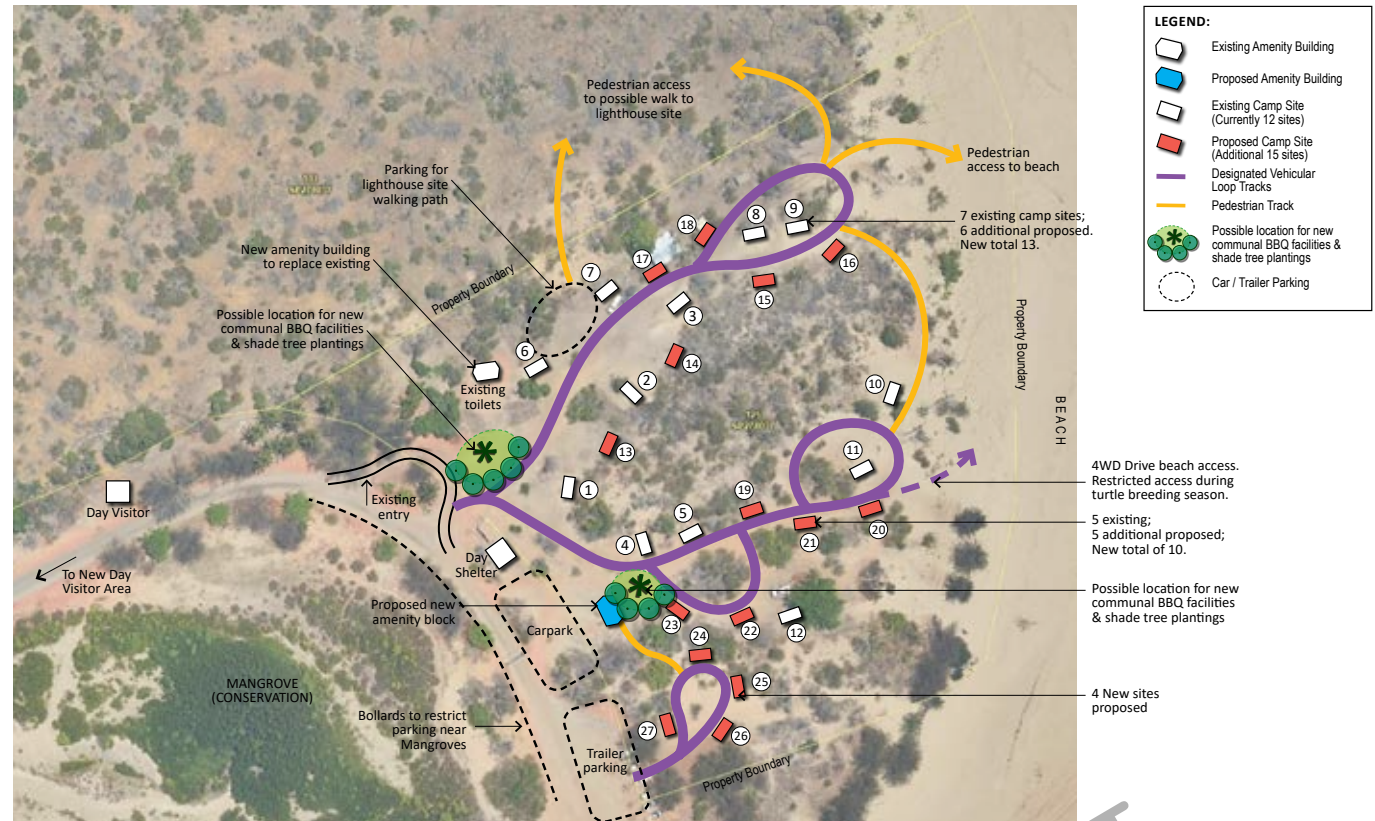
## MAPOON STREETSCAPE UPGRADE Mapoon, Queensland, Australia





# project experience

## CULLEN POINT CAMPGROUND Mapoon, Queensland, Australia



# project experience

## ELORA MEA Gulf Province, Papua New Guinea

Elora Mea is a proposed new capital for Gulf Province in Papua New Guinea. The current capital, Kerema, is located on a narrow headland and is constrained in area for future of growth. A new Provincial capital is planned for 20 kilometres away on a former rubber plantation. The master planning for the new township included site visits and an extensive community consultation programme through a series 2 to 3 day design charrette workshops.

The master plan included the development of a new pattern for urban settlement based on traditional village structures along with the location of essential services and recreation areas.





# project experience

ELORA MEA  
Gulf Province, Papua New Guinea



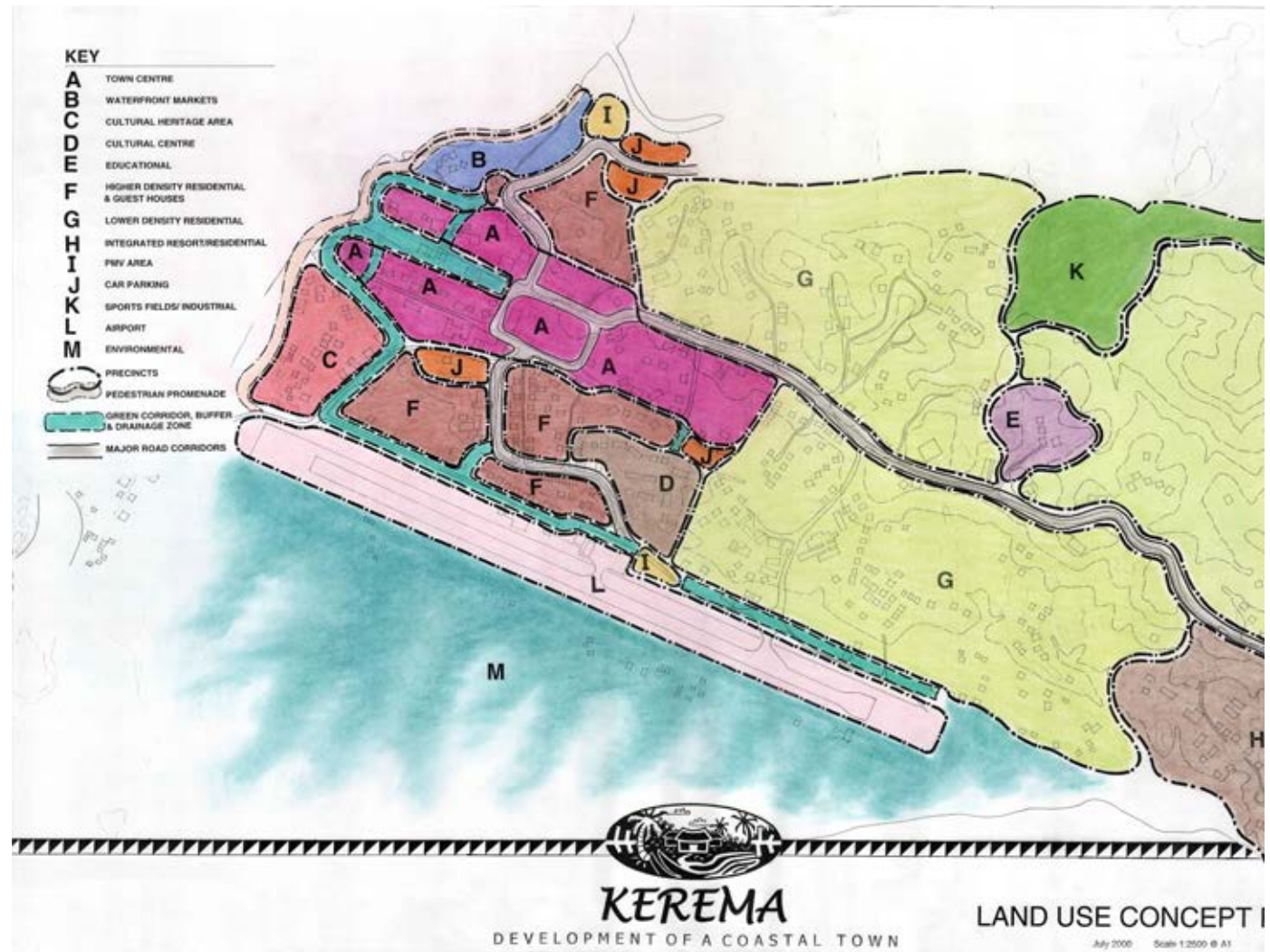
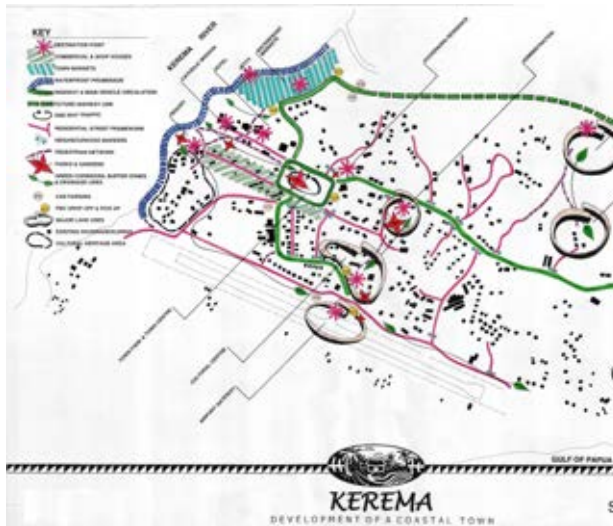


# project experience

## KEREMA Gulf Province, Papua New Guinea

The current capital of Gulf Province, Kerema, is built on narrow headland between river and sea and has limited room to expand. A new Provincial capital is planned for in an inland location, however Kerema will remain a vital coastal port and trading centre. The master planning for the new capital included looking at ways to upgrade the town and plan for the what expansion can be achieved. An extensive community consultation programme through a series of 2 to 3-days design charrette workshops.

A key factor in the upgrade was to retain Kerema's trading role by relocating the town markets to the riverside.





# project experience

KEREMA  
Gulf Province, Papua New Guinea





# project experience

## PAIAM TOWNSHIP

Enga Province, Papua New Guinea

At an altitude of 2,300 metres in the Highlands of Papua New Guinea is the fledging township of Paiam. From the outset, the ongoing sustainability of the town was a key component in the master planning, design development and documentation for the town that houses 400 national and expatriate mine personnel and many locals.

The detail design process included developing a botanical theme for town and garden plantings. This involved research and utilisation of indigenous plants, specimen and theme garden plantings from other high altitude equatorial areas and investigation into subsistence and economic crops.

The project also involved incorporating and developing local arts and crafts skills, vocational and arts training and economic development such as the establishment of plant nurseries, landscape industries. The town market was designed to be able to be built by locals as the focus point for the township





# project experience



## PAIAM TOWNSHIP Enga Province, Papua New Guinea

AWARDS:  
United Nations Habitat, Example of World Best Practice 2000

Australian Institute of Landscape Architects,  
Queensland State Awards  
Award for Excellence in Planning 2007





# project experience

## PORGERA MARKETS

Paiam, Enga Province, Papua New Guinea

Town markets are an important part of village and town life. With the growth of the new township of Paiam there was a need for adequate markets to be provided together with room for the markets to expand. In Papua New Guinea markets are vital to the local cash and trade economy as well as a place to meet.

Throughout the world local markets are one of the key tourist attractions of an area and for Paiam the town's markets were designed by Andrew Prowse to be attractive to visitors as well as functional for locals. The Market halls and stalls were designed to be built by small local landowner builders to assist in local employment, skills development and sense of ownership.

### AWARDS:

United Nations Habitat, Example of World Best Practice 2000

Australian Institute of Landscape Architects,  
Queensland State Awards  
Award for Excellence in Planning 2007 (as part of  
Paiam Township award)





# project experience

PORGERA MARKETS  
Paiam, Enga Province, Papua New Guinea





# project experience

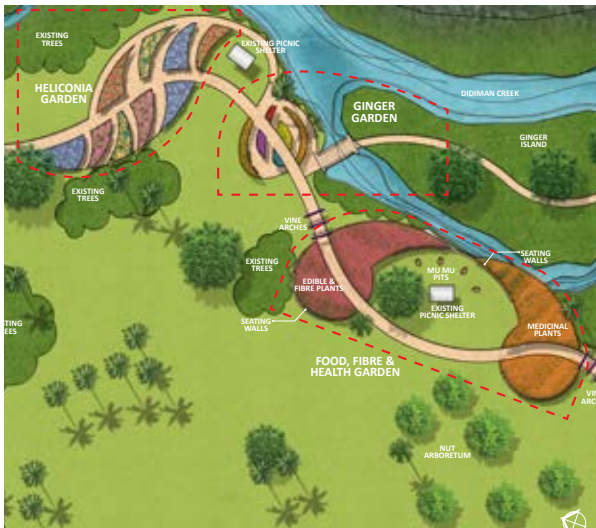
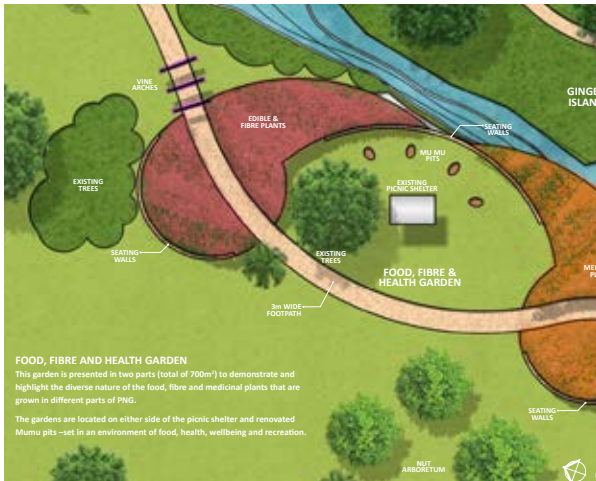
## NATIONAL BOTANIC GARDENS OF PNG (LAE BOTANIC GARDENS) Lae, Papua New Guinea





# project experience

## NATIONAL BOTANIC GARDENS OF PNG (LAE BOTANIC GARDENS) Lae, Papua New Guinea

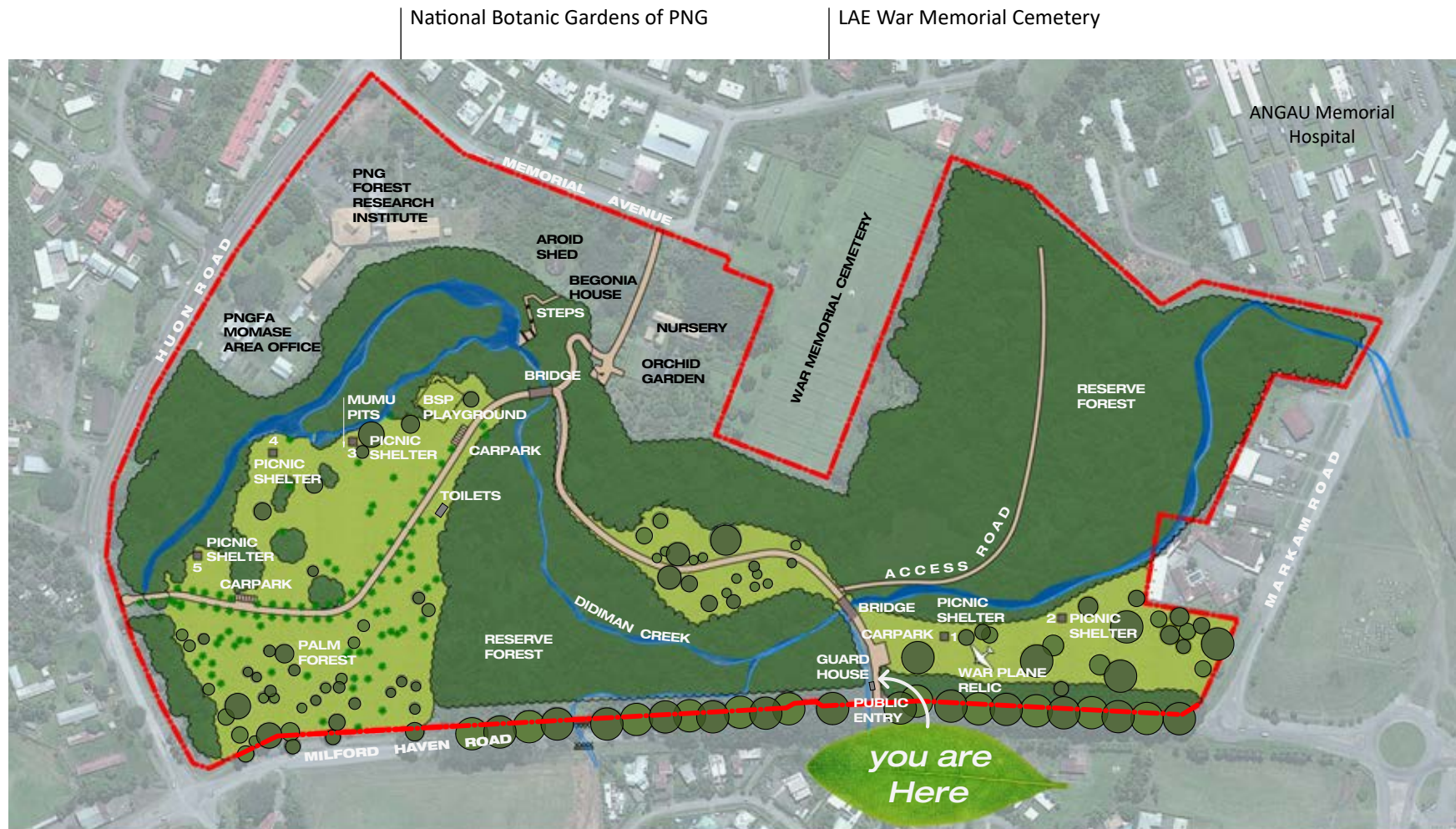




# project experience

## NATIONAL BOTANIC GARDENS OF PNG (LAE BOTANIC GARDENS) Lae, Papua New Guinea

Our current projects adjacent to ANGAU Memorial Hospital:





# project experience

## WESTERN CAPE COLLEGE RESIDENTIAL CAMPUS Rocky Point (Weipa), Queensland

The Western Cape College Residential Campus is a boarding facility for 120 secondary school children from remote and isolated communities throughout the western Cape York region attending Western Cape College in Weipa. The project included construction of an administration building, kitchen/dining hall, large undercover recreational area and separate managers and staff residences. Separate junior and senior boys' and girls' accommodation blocks featured their own landscaped courtyards with seating areas & fire pit with a central communal courtyard wrapping around the undercover recreational area. Extensive planting in and around the facility is predominantly Cape York endemic species with the plant supply being organised in advance of construction with the local Napranum Community Farm.

Client: Western Cape College (through Indigenous Land Corporation & Dept. of Education, QLD)  
Overall cost: \$22 million  
Completed: May 2012





# project experience

## LARAPINTA CHILD AND FAMILY CARE Larapinta, Alice Springs, NT

LA3 has been engaged as the Landscape Architect for the new Larapinta's Child and Family Care facility in Alice Springs. The design involved several considerations in respect to the indigenous community and existing child care centre. The design solutions included local plantings, materials and forms around a nature play theme. A central meeting space serves as a gathering area for children, staff and parents while spaces are divide into different age groups to facilitate safe, passive and active play. The entire landscape and entry areas has artwork installations, and waterplay is a dominant feature. LA3 provided concept through to detailed design and visited Alice Springs on several occasions.





# project experience



LARAPINTA CHILD AND FAMILY CARE  
Larapinta, Alice Springs, NT





# project experience

## TAGAI COLLEGE PRIMARY SCHOOL Mer Island, Queensland

Andrew Prowse designed the school campus gardens and a full sized sports oval for the new primary school on remote Mer Island in the Torres Straits. The new school is also a focus for community activities and inter island sports and cultural days. Construction of the oval on the side of the island's extinct volcano, using only local materials is a challenge that was met by Andrew and the builders. Several metres of level changes were taken advantage of by creating a series of grass terraces that forms into an amphitheatre to the oval for school and community events.





# project experience

## KOOLKAN CHILD CARE CENTRE UPGRADE Aurukun, Queensland

Andrew Prowse of LA3 worked with Cape York Partnerships' Bama Enterprises on the upgrade of the Koolkan Childcare Centre in Aurukun funded by Queensland Education as part of encouraging the transition from kindergarten to Pre-prep. The upgrade included new all weather play surfaces in a variety of textures, replacement of old equipment and the incorporation of a varied play and educational experiences. Challenges include designing for construction in a remote location where transport and trade costs are high to maximise the value for money of the build.





# project experience

## PRIDE OF PLACE

### Aurukun, Hopevale & Mossman Gorge, Queensland

Andrew Prowse, LA3 Designed to improve living standards and build home pride amongst households the Pride of Place project is a programme instigated and run by Cape York Partnership in 4 indigenous communities in north Queensland and Cape York. The work is focused on the gardens of households to make an more usable and healthy outdoor space by providing some paving, gardens, fruit trees, vegetables gardens and a shelter structure (usually about 3x3m, 4x4m or double sized).

The programme had some teething problems with changes of staff (some of whom may not be well versed in design) and inconsistency in implementation, so as Landscape Architects we assisted in the creation of a handbook for the Enablers (CYP staff in the field who implemented the works) that included setting out a templates for choice and design of the improvements, appropriate plants lists, materials and design and construction guidance. The programme has provided many backyards in the communities and has a marked improvement in the liveability of





# project experience

## DARU HOSPITAL

Daru Island, Western Province, Papua New Guinea

Andrew Prowse provided urban design and landscape design input into the feasibility study for a new hospital & associated staff housing. Urban design issues included investigating suitable sites for a new hospital within the island township regards access, services and buildability. Landscape design considerations included assessing existing vegetation and the landscape settings for hospital grounds with breakout courtyards for patients, visitors and staff. A sketch design was also provided for the staff housing layout and an assistance area for wontok's (family members).

Consultation included a week long visit with stakeholder meetings, site measurements and an assessment of the condition of town access to the hospital site.

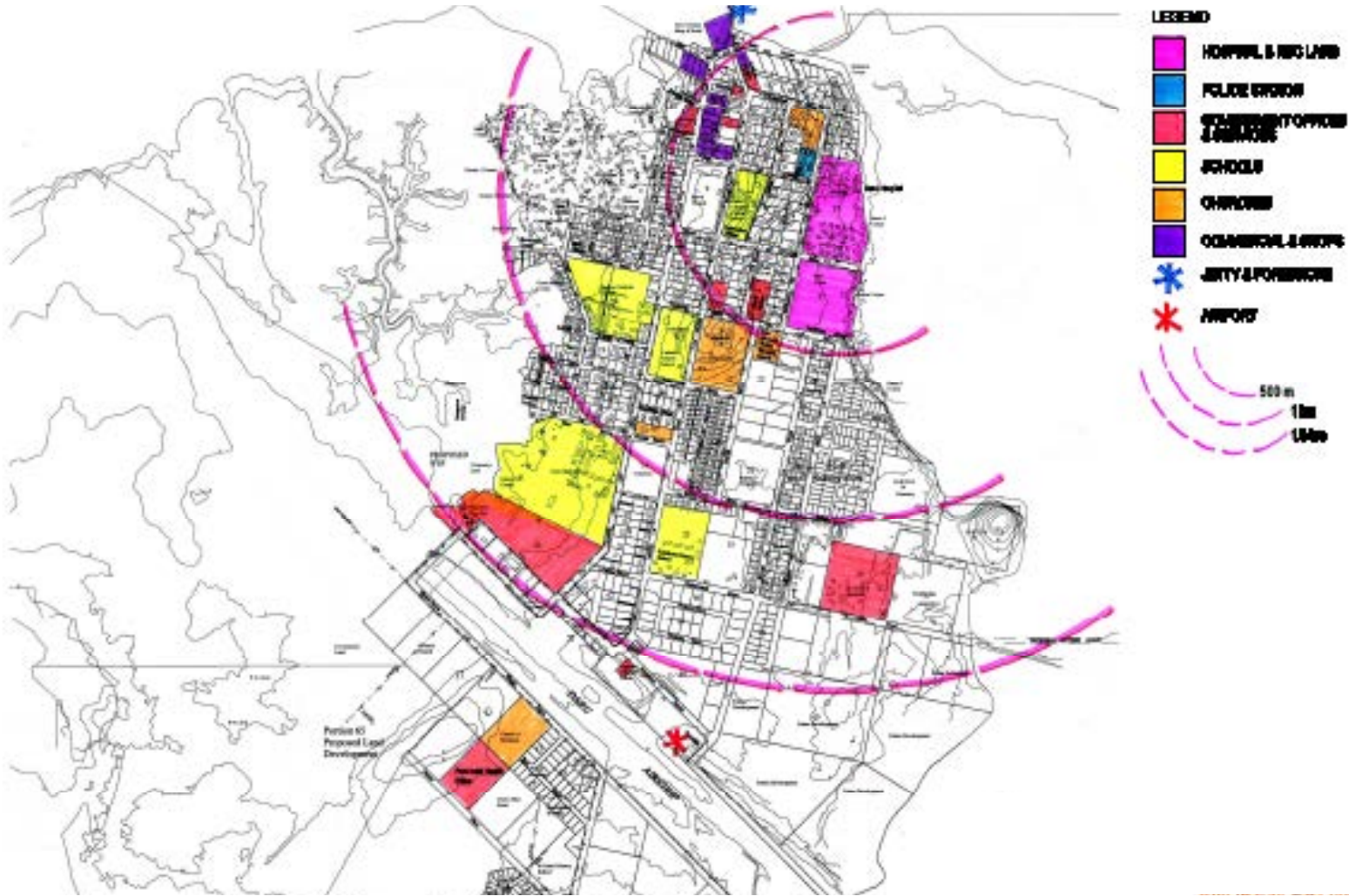




# project experience



DARU HOSPITAL  
Daru Island, Western Province, Papua New Guinea

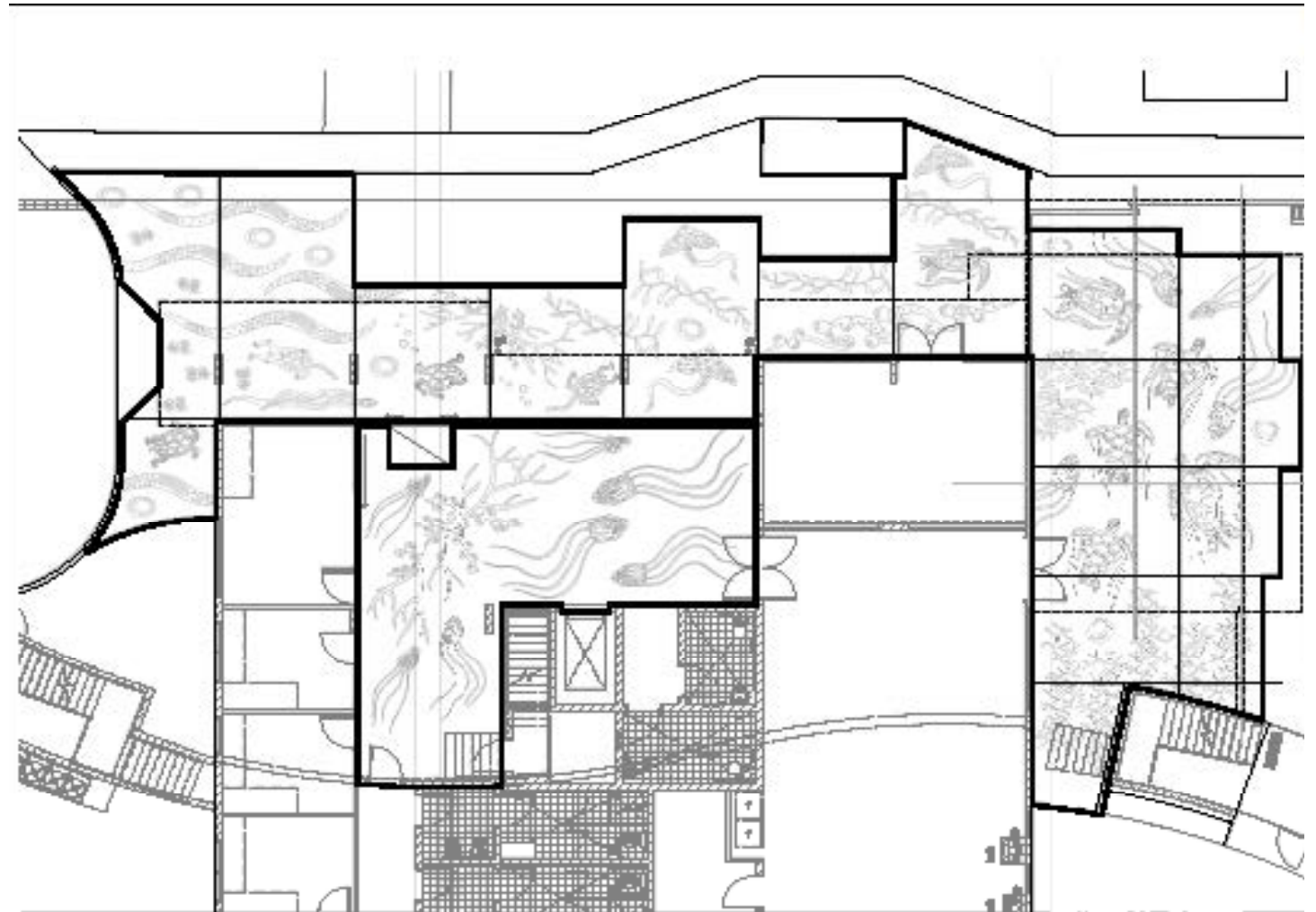




# project experience

## RED CROSS WELLNESS CENTRE Cairns North, Queensland

The Red Cross Wellness Centre primarily caters for out-patients, families and friends of patients from the Aboriginal & Torres Strait Islander communities of Northern Queensland. To provide a more welcoming and assuring feel to the facility Andrew Prowse worked with local contemporary indigenous artist Arone Meeks on a large-scale artwork. This artwork in embossed concrete and etched tiling extends throughout all the ground floor foyer, external space and adjacent footpath tells the story of marine life and the seasons in the Cairns & Cape





# project experience

## NAURU GOVERNMENT PRECINCT AND WATERFRONT DEVELOPMENT Nauru, Queensland, Australia

The Pacific island nation of Nauru has planned a major upgrade of their port facility, as part of this redevelopment project LA3 APLA prepared foreshore master plan options stretching from the harbour to the historic and still operating cantilevers structures for phosphate loading. The foreshore development creates a significant civic space for events including an amphitheatre, waterfront stage and market place locations. Recreational facilities include a harbourside ocean swimming pool. Historic buildings from the British Phosphate Company era are incorporated into the plan. A new memorial celebrating the return of Nauru survivors from Chuuk Lagoon after the Japanese occupation in the Second World War is planned as a first stage of the redevelopment.





# project experience



## NAURU GOVERNMENT PRECINCT AND WATERFRONT DEVELOPMENT Nauru, Queensland, Australia







**Office Locations:**

**North Queensland Office**

457 Draper Street, Parramatta Park QLD 4870

**Central Queensland Office**

8 The Crescent, Agnes Water QLD 4677

**Gold Coast Office**

Level 13, 50 Cavill Avenue, Surfers Paradise

Postal Address: PO Box 5397, Cairns QLD 4870

T +61 7 4031 3993 E info@LA3.com.au