

## National Parks Capability



### Office Locations:

North Queensland Office  
457 Draper Street, Parramatta Park QLD 4870

Central Queensland Office  
8 The Crescent, Agnes Water QLD 4677  
Postal Address: PO Box 5397, Cairns QLD 4870  
T +61 7 4031 3993 E info@LA3.com.au

# about us



*“ we aim to create significant and viable spaces,  
with community and the entire life cycle in mind ”*

LA3 is a Queensland based local consultancy with landscape architecture, master planning and urban design professionals providing quality services for a diverse range of projects in Australia and Asia-Pacific. Now 12-years old, the LA3 business includes professionals with experience in the industry of more than 30-years. Our design approach is based on a detailed assessment of the natural systems of a given site and an understanding of the cultural heritage qualities of that place.

We provide creative, robust and strategic visions which result in innovative and practical site-responsive solutions. LA3 provides design services from concept through to detailed design and documentation, and supervision. We can lead the design process or support you in the documenting aspects of your design.

We can also prepare contemporary 2D and 3D visualisations. In providing these services, we aim to create significant and viable spaces, with the community and the entire life cycle in mind.

The LA3 Team advantage comes from its depth of experience in providing full suite of services including:

Landscape Architecture;  
Master Planning;  
Architecture;  
Urban Design;  
Planning;  
Consultation;  
Horticulture;  
Visual Impact Assessment;  
Design Management; and  
Graphics and Visualisations.

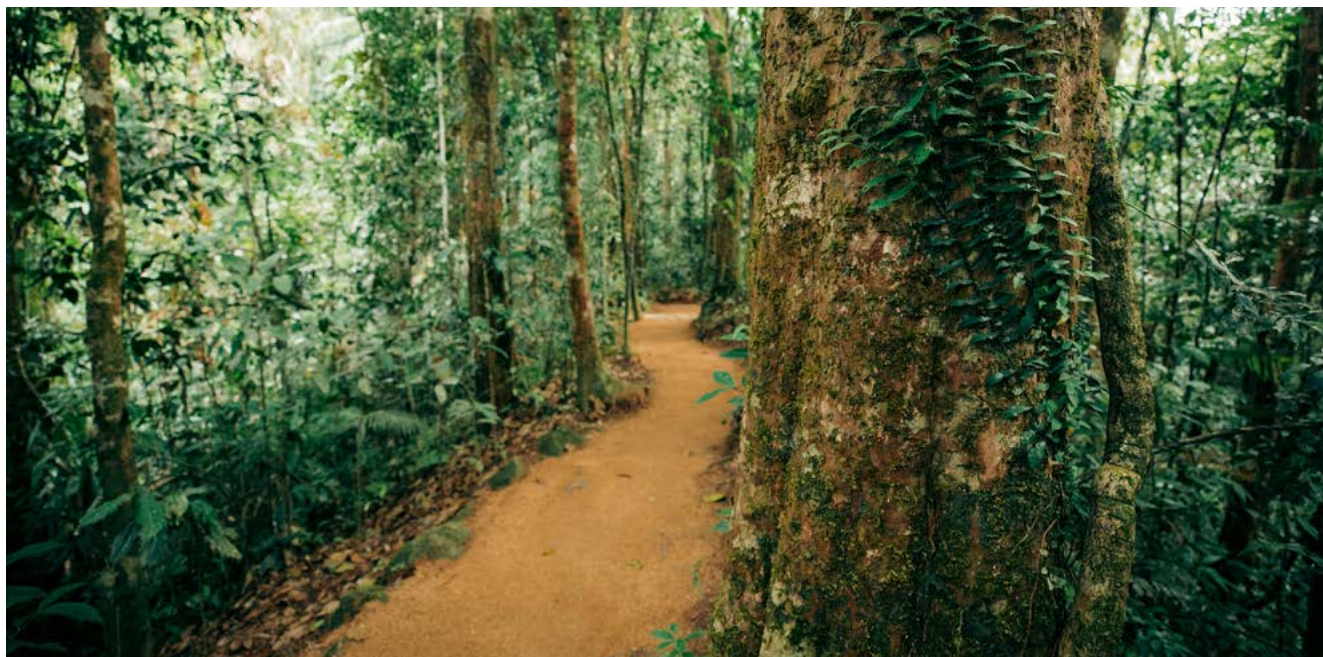
Our approach enables our clients to achieve quality design outcomes on time and on budget above expectations. We have experience in a wide range of environments locally and globally and we understand the socio-cultural and environment uniqueness of each. We understand that our clients want the best value for money and we partner with them to achieve mutually beneficial results.

We manage sub-consultants including:

- Civil & Structural Engineering
- Geotechnical & Arborists
- Environmental Consultants
- Specialist lighting Design
- Artists & Community Art Projects

We can manage your contract providing advice on:

- Tendering & Award
- Quality Inspections
- Practical Completion
- Final Completion Certificates



*Mossman Gorge Walking Track, Mossman, Queensland, Australia*

## OUR PEOPLE

We are actively engaged in pushing the boundaries of design locally, putting our products at par with the rest of the world.

The LA3 team has undertaken projects of varying complexities both locally and overseas, and understands the importance of:

- Working collaboratively with clients to identify needs and develop project design and implementation strategies;
- Understanding the contextual and site opportunities and constraints, to develop a solid basis for future strategies;
- Formulating a vision for the future use and management of the facilities and open spaces.

## OUR PHILOSOPHY

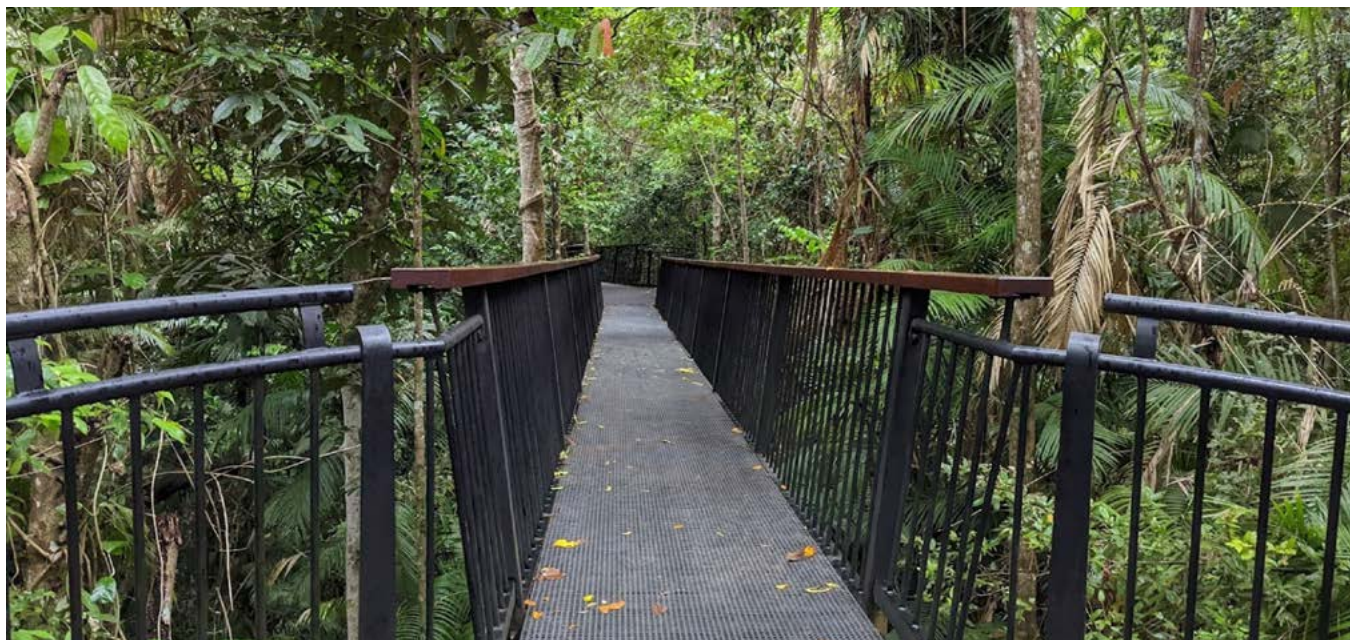
A strong client-stakeholder-designer partnership inspires us. We strongly believe that a collaborative method of working brings out the best outcomes for all our projects. We always work with our clients and stakeholders to provide robust design solutions that benefit everyone in the partnership in all circumstances.

## OUR DIFFERENTIATORS

With numerous firms providing the same or similar set of services, LA3 must demonstrate its point of difference. Our commitment is to deliver premium service to our clients, strive to excel beyond our own limitations, improve upon our standards and continue setting high-standards. We take pride in sharing with you, a few of our differentiators:

- We are advocates of environmentally sustainable design and development;

- We value the inputs of others and we always practise a design approach collaboratively;
- We maintain a very reliable network and we partner with like-minded professionals depending on project requirements.
- We have a broad skill sets to manage a larger multidisciplinary team;
- With our global exposure, we have a great depth of combined individual experiences;
- We operate with a fresh philosophy.



*Barron Gorge Visitor Facilities, Cairns. Queensland*

# key people



## JOSEPH CORBIN

Managing Director, RLA AILA

Joseph is an AILA-Registered Landscape Architect with 30 years of professional experience in Northern Australia and Asia Pacific and 6 years in the Arabian Gulf. His long list of completed projects reflects his varied experience in design management, landscape architecture, urban design and landscape masterplanning.

He has a strong interest in the tropical Built Environment, place making, landscape and urban design. He enjoys co-design. He has managed large teams on landmark projects such as the Cardwell Foreshore Redevelopment. He was design manager of the significant Al Seef waterfront project for Aldar in Abu Dhabi in 2008 and the Doha Sports City in Qatar prior to that. He is currently designing Bargara Foreshore near Bundaberg.

He is based in Cairns as founding Director of LA3 and currently engaged in several important local projects including the Masterplanning of The Lake Eacham Visitor Facilities upgrade, Misson Beach Master plan and The Bellingen Main Street Redevelopment in NSW, and the Kuranda & Cardwell Cultural Precincts.

m: +61 410 773 772  
e: Joseph@LA3.com.au



## ANDREW PROWSE

Design Director, RLA AILA

Andrew has extensive landscape architectural experience in local community and tourism projects and has been responsible the design of many memorable landscapes in Port Douglas & Cairns. He was the Lead Landscape Architect for the Cairns Cultural Precinct (CPAC).

His design expertise has been recognised by many international, national and state awards including the Australia Council's inaugural Community Environment Art & Design Award for National Achievement in the Arts for the Gordonvale Townscape project. His projects have received several Australian Institute of Landscape Architect's Awards and his design for Munro Martin Parklands in Cairns new Entertainment Precinct won the AIA State Award for Urban Design & FNQ Project of the year Award. His work at the Reconciliation Rocks in Cooktown also won an AILA Award.

Andrew's strength is in connecting with the project team and stakeholders, the visioning of a project at the outset, and providing a unique and inspiring landscape character to a new developments.

m: +61 413 278 308  
e: Andrew@LA3.com.au



## JHAY BANIAGA

Senior Landscape Architect

Jhay is a Senior Landscape Architect with a wide range of professional experience locally and internationally working with LA3 for 7 years.

As well as leading the design documentation for the landmark Cardwell Foreshore project in Nth Qld, he has worked on all aspects of design for LA3 from sketch design to Detailed Design and documentation.

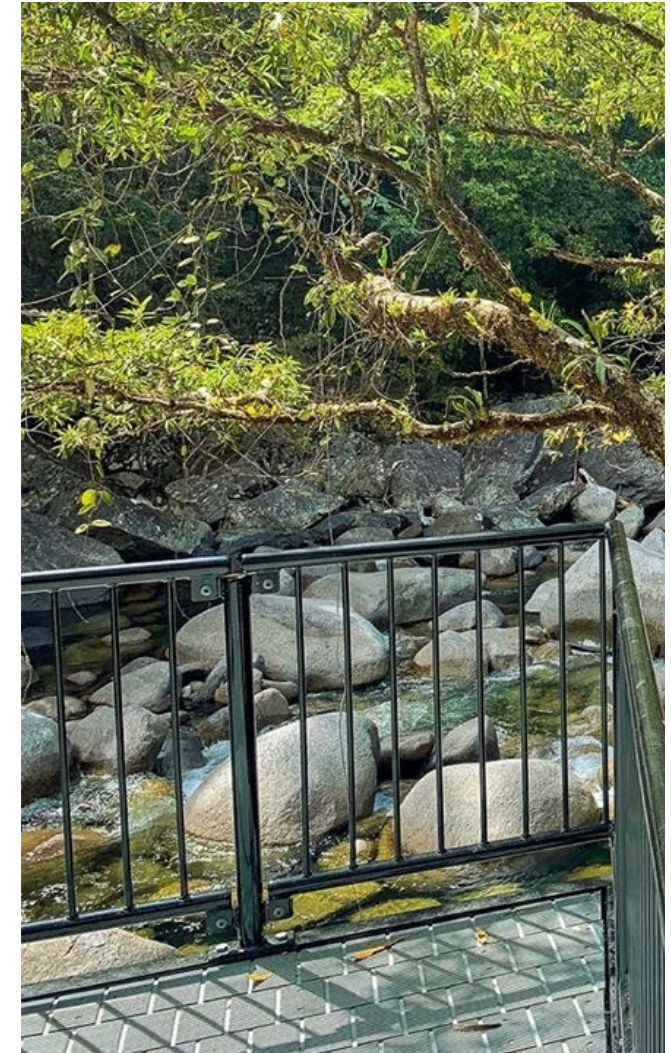
Jhay is familiar with Mossman and Port Douglas and the conditions of Far North Queensland, world tropics and has a keen interest in detailing of landscapes. He has skills in Master Planning and Public Consultation having worked as a facilitator. His solid experience in detailed documentation, conceptualisation and 3D visualisation demonstrates his skills as a talented designer.

t: +617 4031 3993  
e: Jhay@LA3.com.au

# project experience

## QPWS&P MOSSMAN GORGE WALKING TRACK UPGRADE Mossman, Queensland, Australia

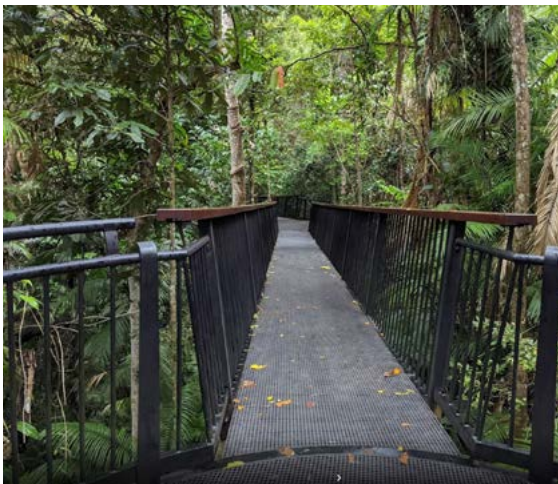
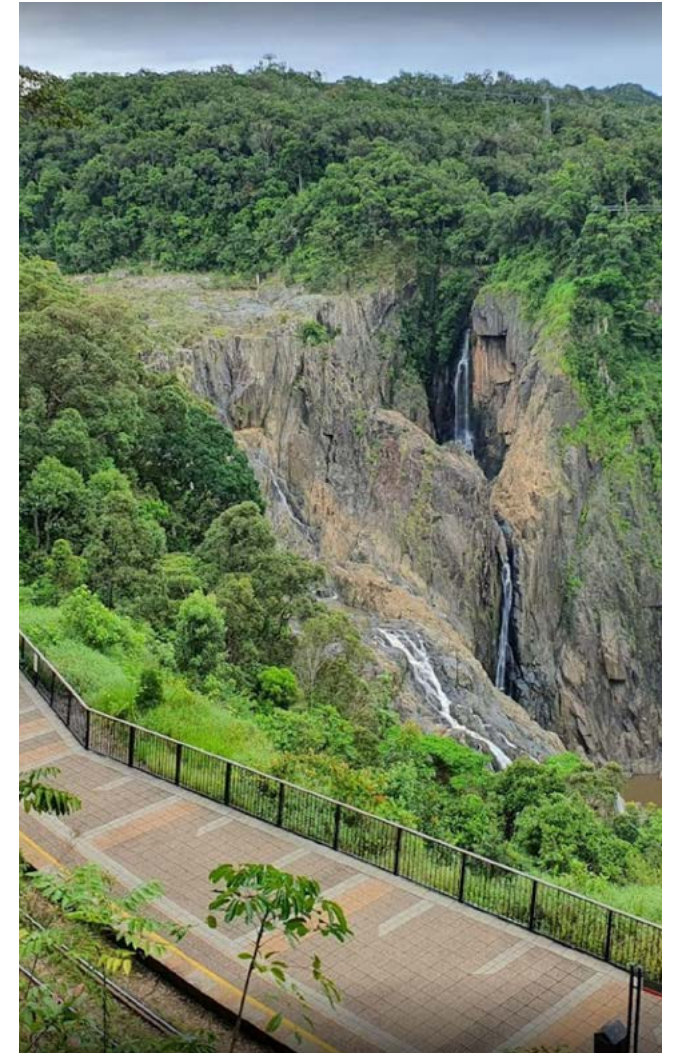
Mossman Gorge in the Daintree National Park is a major attraction in Far North Queensland with more than a 1/3 million visitors yearly to the gorge. It's popularity for domestic and international visitors due to it being accessible to the the tourism centres of Cairns and Port Douglas along with being a popular swimming hole destination for locals. These high visitor numbers and the the extreme tropical weather patterns in the gorge result in severe wear of the trails. LA3 has documented new Class 2 surfaces for the walking trails that commence at this point including new riverside lookouts to assist in the management of the daily visitation.



# project experience

## QPWS&P BARRON GORGE Cairns, Queensland, Australia

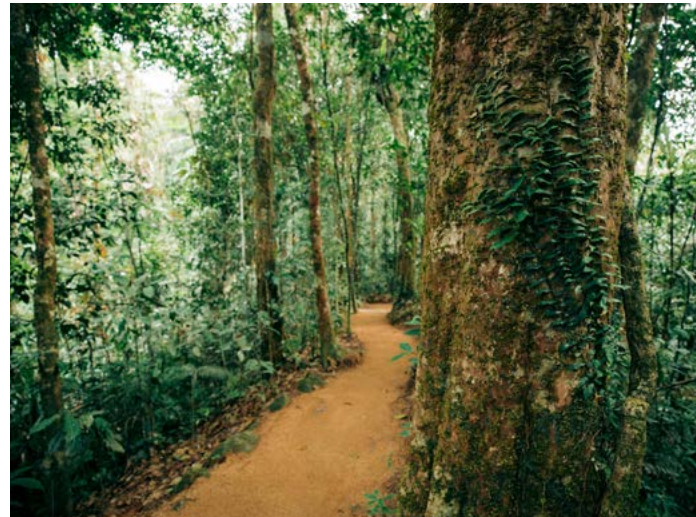
LA3 has considerable experience in designing visitor facilities for forestry, National & Conservation Park users in tourism locations. Our team has worked on important visitor facility projects in the World Heritage Area of the North Queensland's Wet Tropics for WTMA & QPWS for 25 yrs. The projects included detailed design & documentation of visitor facilities with boardwalks, all mobility access ramps, viewing platforms, picnic shelters, and other visitor amenities. Other Aspects of the projects include, coordination and incorporation of EIS results and geotechnical survey results, liaison with civil and structural project engineers, interpretive analysis and coordination with graphic designers and detailed design and documentation for construction including re-vegetation plans.



# project experience

## QPWS&P MOSSMAN GORGE WALKING TRACK Mossman, Queensland, Australia

LA3 & Contourworks recently completed the Upper Mossman Gorge Track redevelopment in the Daintree National Park for QPWS. This location is a major attraction in Far North Queensland with more than 1/3 million visitors yearly to the gorge. Its popularity for domestic and international visitors due to it being accessible to the tourism centres in Cairns and Port Douglas along with being a popular swimming hole destination for locals. These high visitor numbers and the extreme tropical weather patterns in the gorge result in severe wear of the trails. LA3 has documented Class 2 surfaces for the walking trails that commence at this point including new riverside lookouts and access trails to assist in the management of the daily visitation.



# project experience

QPWS&P MOSSMAN GORGE WALKING TRACK  
Mossman, Queensland, Australia





# project experience

## MOUNT ISA SELF-GUIDED BIRD WATCHING Mount Isa, Queensland, Australia

LA3 has prepared the Self Guided Bird Watching Strategy for Mount Isa City Council in consultation with the local and keen birdwatching community. The task for LA3 was to develop a self-guided drive, design sufficient birdhides, interpretive signage, facilities and walking trails for visitors and bird watchers. This in which will support eco-tourism initiatives and enhance the type of tourism on offer in Mount Isa. The project aims to capitalise on existing sites which currently may be well visited by locals however lack sufficient signage to enable access and visitation for tourists.



# project experience

## CASTLE HILL LOOKOUT Townsville, Queensland, Australia

Andrew Prowse & Joseph Corbin worked on the first Master Plan for Castle Hill day visitor area in Townsville in the 1990's. Part of the detailed design that came out of the solutions was the lookout main viewing platform looking East over The Strand and to Magnetic Island. The carpark and safety for pedestrians using the lookout was addressed and the use of natural stone walls and balustrading meeting safety codes as well as important shade was installed.



# project experience

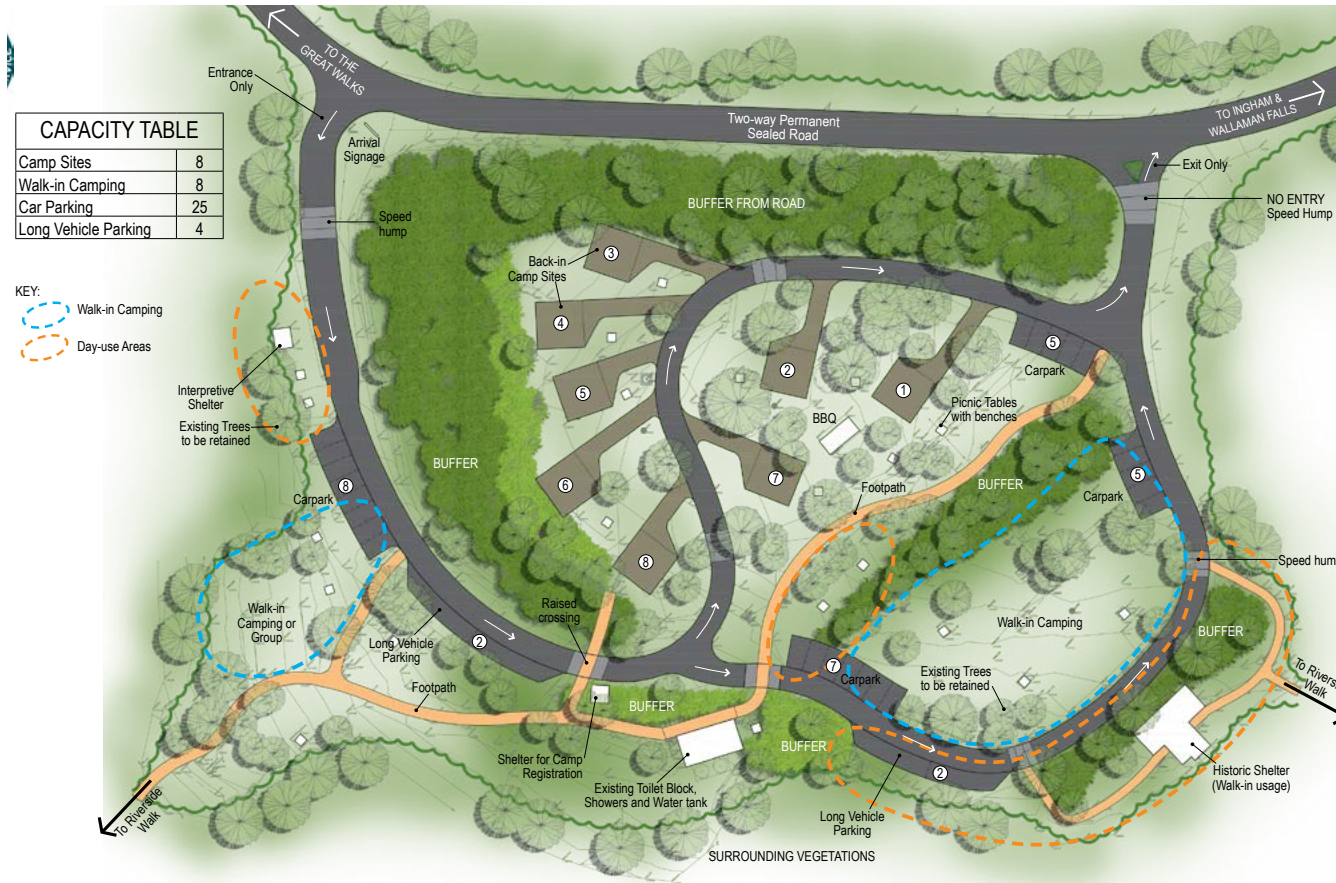


## WALLAMAN FALLS WALKING TRAIL AND VISITOR FACILITIES UPGRADE Wallaman, Queensland, Australia



# project experience

## WALLAMAN FALLS WALKING TRAIL AND VISITOR FACILITIES UPGRADE Wallaman, Queensland, Australia



# project experience

LAKE MOONDARRA  
Mount Isa, Queensland, Australia



# project experience

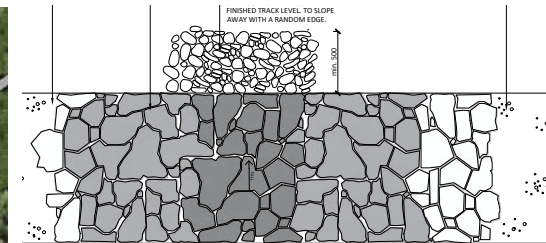


LAKE EACHAM VISITOR FACILITIES  
Crater Lakes National Park, Queensland, Australia

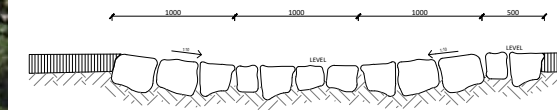


# project experience

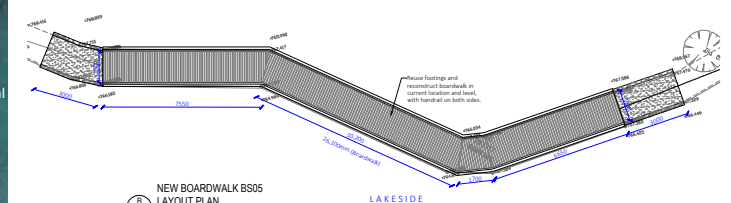
## LAKE EACHAM VISITOR FACILITIES Crater Lakes National Zone Park, Queensland, Australia



**A** ROCK ARMoured CROSS DRAIN PLAN  
SCALE 1:10 @ A1  
1:20 @ A3



**B** NEW BOARDWALK BS05  
LAYOUT PLAN  
SCALE 1:50 @ A1  
1:100 @ A3



**C** NEW BOARDWALK & TRACK  
BS06 & BS07 LAYOUT PLAN  
SCALE 1:50 @ A1  
1:100 @ A3

# project experience

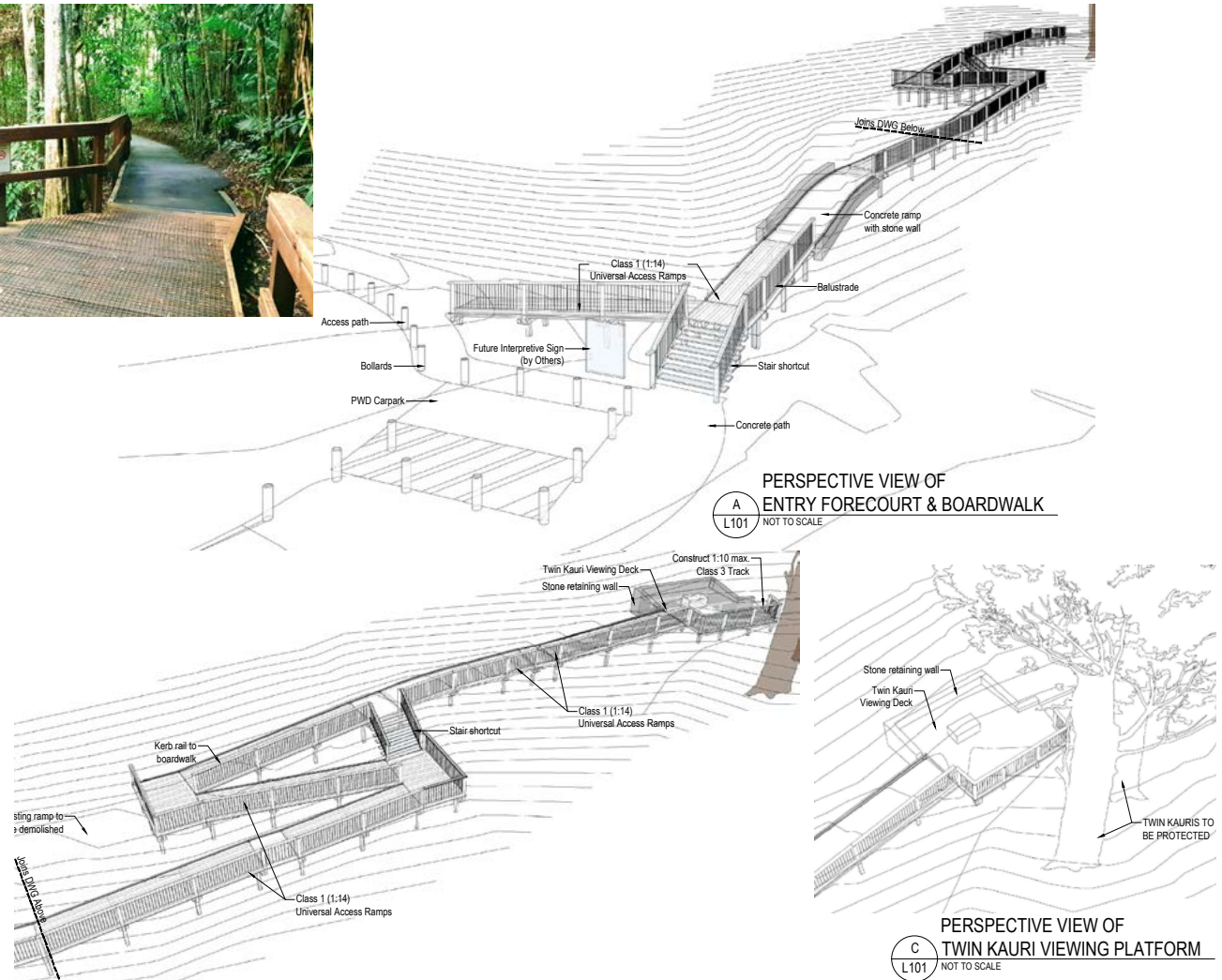
## LAKE BARRINE VISITOR FACILITIES Crater Lakes National Park, Queensland, Australia





# project experience

## LAKE BARRINE VISITOR FACILITIES Crater Lakes National Park, Queensland, Australia



# project experience

## MOUNT ISA LOOKOUT Mount Isa, Queensland, Australia

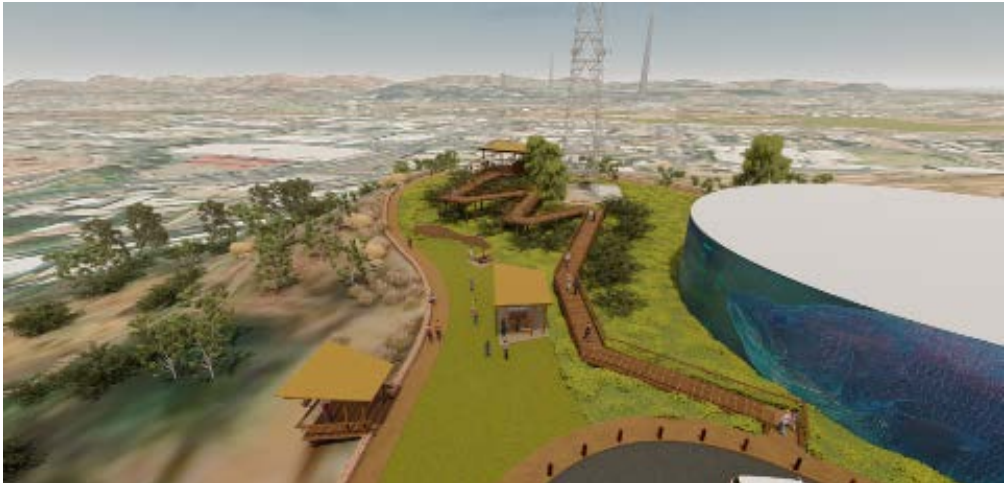
Mount Isa City Lookout Redevelopment Master Plan was recently completed by LA3. The project will revitalise the existing City Lookout creating a more attractive and accessible destination for locals and visitors alike. New lookouts N-S-E-W sides, access ramps, pathways and stairways from a refurbished upper and lower carpark will enliven the environs and make circulation and appreciation of the views easier and more inspiring.



# project experience



MOUNT ISA LOOKOUT  
Mount Isa, Queensland, Australia



# project experience

## ALEXANDRA RANGE LOOKOUT Mossman, Queensland, Australia

LA3 recently prepared a Master Plan for the sometimes overcrowded lookout at Alexandra Headland including providing a new Viewing Platform, reorganised carparking layout with new spacious lookout, interpretive shelters, bus and PWD access car parking facilities. The drawings prepared in 3D as well as in 2D assist in the consultation process with stakeholders and Traditional Owners. The outcome was clear and concise and well received by the client.



# project experience

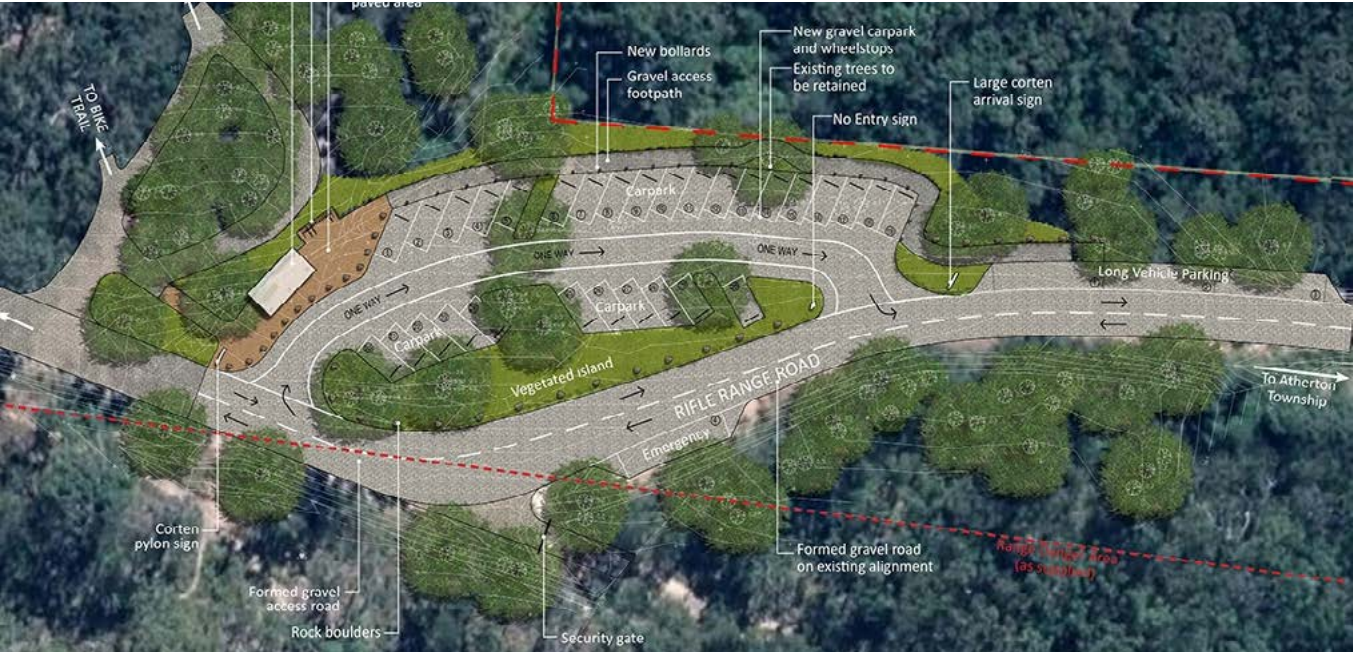


ALEXANDRA RANGE LOOKOUT  
Mossman, Queensland, Australia



# project experience

## ATHERTON FOREST MOUNTAIN BIKE PARK Atherton, Queensland, Australia





# project experience

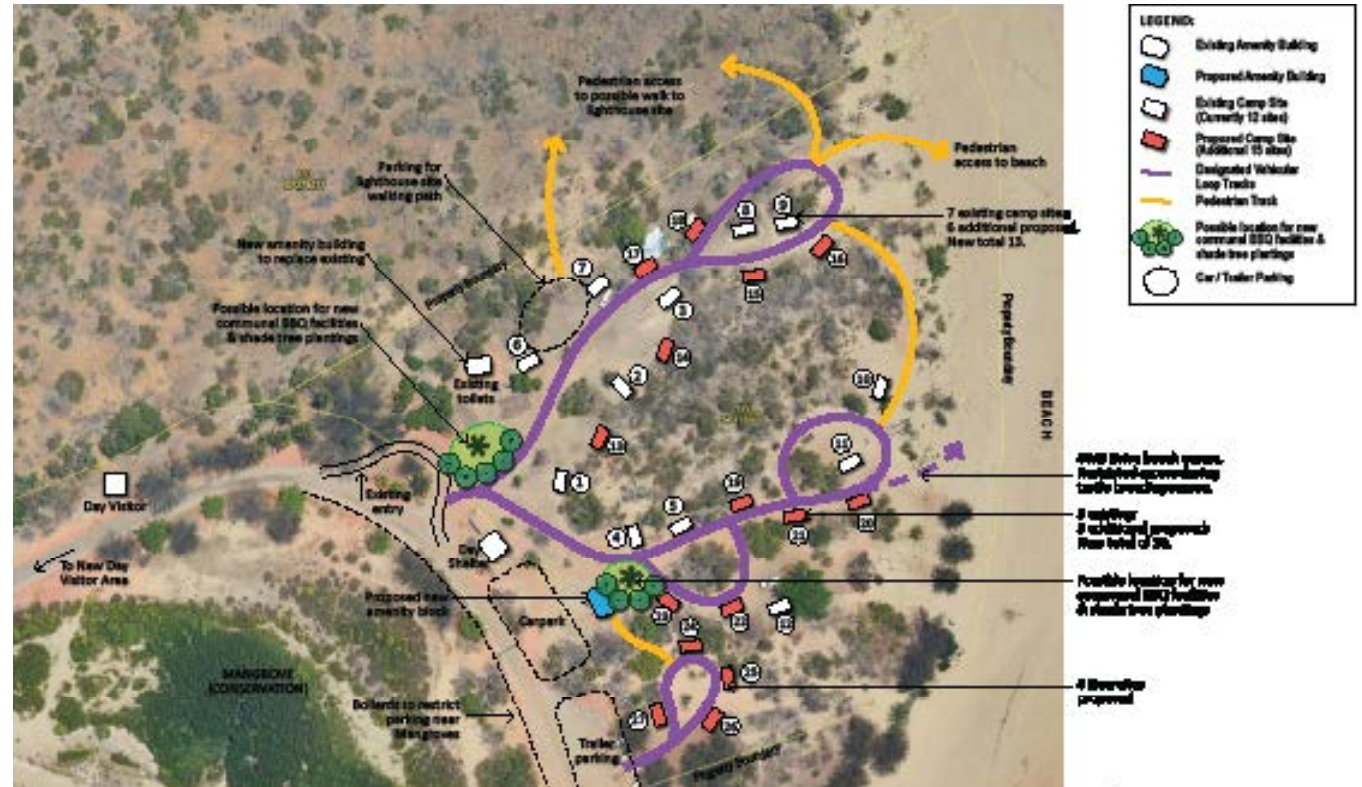
## FONG ON BAY CAMPGROUNDS UPGRADE Danbulla, Queensland, Australia





# project experience

## CULLEN POINT CAMPGROUND Mapoon, Queensland, Australia





**Office Locations:**

**North Queensland Office**  
457 Draper Street, Parramatta Park QLD 4870

**Central Queensland Office**  
8 The Crescent, Agnes Water QLD 4677

**Postal Address:** PO Box 5397, Cairns QLD 4870  
T +61 7 4031 3993 E info@LA3.com.au