

Resort & Tourism Capability



Office Locations:

North Queensland Office
457 Draper Street, Parramatta Park QLD 4870

Central Queensland Office
8 The Crescent, Agnes Water QLD 4677
Postal Address: PO Box 5397, Cairns QLD 4870
T +61 7 4031 3993 E info@LA3.com.au

about us



*“ we aim to create significant and viable spaces,
with community and the entire life cycle in mind ”*

LA3 is a Queensland based local consultancy with landscape architecture, master planning and urban design professionals providing quality services for a diverse range of projects in Australia and Asia-Pacific. Now 12-years old, the LA3 business includes professionals with experience in the industry of more than 30-years. Our design approach is based on a detailed assessment of the natural systems of a given site and an understanding of the cultural heritage qualities of that place.

We provide creative, robust and strategic visions which result in innovative and practical site-responsive solutions. LA3 provides design services from concept through to detailed design and documentation, and supervision. We can lead the design process or support you in the documenting aspects of your design.

We can also prepare contemporary 2D and 3D visualisations. In providing these services, we aim to create significant and viable spaces, with the community and the entire life cycle in mind.

The LA3 Team advantage comes from its depth of experience in providing full suite of services including:

Landscape Architecture;
Master Planning;
Architecture;
Urban Design;
Planning;
Consultation;
Horticulture;
Visual Impact Assessment;
Design Management; and
Graphics and Visualisations.

Our approach enables our clients to achieve quality design outcomes on time and on budget above expectations. We have experience in a wide range of environments locally and globally and we understand the socio-cultural and environment uniqueness of each. We understand that our clients want the best value for money and we partner with them to achieve mutually beneficial results.

We manage sub-consultants including:

- Civil & Structural Engineering
- Geotechnical & Arborists
- Environmental Consultants
- Specialist lighting Design
- Artists & Community Art Projects

We can manage your contract providing advice on:

- Tendering & Award
- Quality Inspections
- Practical Completion
- Final Completion Certificates



The Peninsula, Port Douglas, Queensland, Australia - Designed by LA3

OUR PEOPLE

We are actively engaged in pushing the boundaries of design locally, putting our products at par with the rest of the world.

The LA3 team has undertaken projects of varying complexities both locally and overseas, and understands the importance of:

- Working collaboratively with clients to identify needs and develop project design and implementation strategies;
- Understanding the contextual and site opportunities and constraints, to develop a solid basis for future strategies;
- Formulating a vision for the future use and management of the facilities and open spaces.

OUR PHILOSOPHY

A strong client-stakeholder-designer partnership inspires us. We strongly believe that a collaborative method of working brings out the best outcomes for all our projects. We always work with our clients and stakeholders to provide robust design solutions that benefit everyone in the partnership in all circumstances.

OUR DIFFERENTIATORS

With numerous firms providing the same or similar set of services, LA3 must demonstrate its point of difference. Our commitment is to deliver premium service to our clients, strive to excel beyond our own limitations, improve upon our standards and continue setting high-standards. We take pride in sharing with you, a few of our differentiators:

- We are advocates of environmentally sustainable design and development;

- We value the inputs of others and we always practise a design approach collaboratively;
- We maintain a very reliable network and we partner with like-minded professionals depending on project requirements.
- We have a broad skill sets to manage a larger multidisciplinary team;
- With our global exposure, we have a great depth of combined individual experiences;
- We operate with a fresh philosophy.



The Lakes, Cairns, Queensland, Australia

key people



JOSEPH CORBIN

Managing Director, RLA AILA

Joseph is an AILA-Registered Landscape Architect with 30 years of professional experience in Northern Australia and Asia Pacific and 6 years in the Arabian Gulf. His long list of completed projects reflects his varied experience in design management, landscape architecture, urban design and landscape masterplanning.

He has a strong interest in the tropical Built Environment, place making, landscape and urban design. He enjoys co-design. He has managed large teams on landmark projects such as the Cardwell Foreshore Redevelopment. He was design manager of the significant Al Seef waterfront project for Aldar in Abu Dhabi in 2008 and the Doha Sports City in Qatar prior to that. He is currently designing Bargara Foreshore near Bundaberg.

He is based in Cairns as founding Director of LA3 and currently engaged in several important local projects including the Masterplanning of The Lake Eacham Visitor Facilities upgrade, Misson Beach Master plan and The Bellingen Main Street Redevelopment in NSW, and the Kuranda & Cardwell Cultural Precincts.

m: +61 410 773 772
e: Joseph@LA3.com.au



ANDREW PROWSE

Design Director, RLA AILA

Andrew has extensive landscape architectural experience in local community and tourism projects and has been responsible the design of many memorable landscapes in Port Douglas & Cairns. He was the Lead Landscape Architect for the Cairns Cultural Precinct (CPAC).

His design expertise has been recognised by many international, national and state awards including the Australia Council's inaugural Community Environment Art & Design Award for National Achievement in the Arts for the Gordonvale Townscape project. His projects have received several Australian Institute of Landscape Architect's Awards and his design for Munro Martin Parklands in Cairns new Entertainment Precinct won the AIA State Award for Urban Design & FNQ Project of the year Award. His work at the Reconciliation Rocks in Cooktown also won an AILA Award.

Andrew's strength is in connecting with the project team and stakeholders, the visioning of a project at the outset, and providing a unique and inspiring landscape character to a new developments.

m: +61 413 278 308
e: Andrew@LA3.com.au



JHAY BANIAGA

Senior Landscape Architect

Jhay is a Senior Landscape Architect with a wide range of professional experience locally and internationally working with LA3 for 7 years.

As well as leading the design documentation for the landmark Cardwell Foreshore project in Nth Qld, he has worked on all aspects of design for LA3 from sketch design to Detailed Design and documentation.

Jhay is familiar with Mossman and Port Douglas and the conditions of Far North Queensland, world tropics and has a keen interest in detailing of landscapes. He has skills in Master Planning and Public Consultation having worked as a facilitator. His solid experience in detailed documentation, conceptualisation and 3D visualisation demonstrates his skills as a talented designer.

t: +617 4031 3993
e: Jhay@LA3.com.au

project experience



THE PENINSULA Port Douglas, Queensland, Australia

1/4 hectare of garden & pool
30 apartments & 2 pools
Opened 2002
Garden & pool budget half million dollars



project experience



THE PENINSULA
Port Douglas, Queensland, Australia



project experience

PEPPERS BEACH CLUBS

Palm Cove & Port Douglas, Queensland, Australia

1.5 hectares of garden & lagoon pool
150 apartments & 3 pools
Opened 2002
Garden & pool budget 2.5 million dollars



project experience



PEPPERS BEACH CLUBS
Palm Cove & Port Douglas, Queensland, Australia



project experience



THE LAKES RESORT Cairns, Queensland, Australia

4.5 hectares of garden
350 apartments & 4 pools
Built 1997 - 2000
Garden & pools budget 4 million dollars



project experience



THE LAKES RESORT
Cairns, Queensland, Australia



project experience

CAIRNS ONE Cairns, Queensland, Australia

2 hectares of garden with 9 pools
450 apartments & 15 villas
Built 2004 - 2006
Garden & pools budget 6 million dollars



project experience



CAIRNS ONE
Cairns, Queensland, Australia



project experience



MANTRA AMPHORA RESORT PALM COVE
Palm Cove, Queensland, Australia



project experience



THE PORTSEA
Port Douglas, Queensland, Australia



project experience



MONTPELLIER BOUTIQUE RESORT
Noosaville, Queensland, Australia



project experience



SHERATON SAMOA AGGIE GREY'S HOTEL & BUNGALOWS Apia, Samoa



project experience

ANJEA, BEACHFRONT MIRAGE
Port Douglas, Queensland, Australia



project experience

ANJEA, BEACHFRONT MIRAGE
Port Douglas, Queensland, Australia



project experience



STRUTHERS RESIDENCE
Port Douglas, Queensland, Australia



project experience

BOTANICA LIFESTYLE RESORT Cairns, Queensland, Australia

LA3 is currently designing the masterplan of The Botanica Lifestyle Resort, a new community that promotes active lifestyles and a sense of belonging and security for residents. Botanica is superbly planned to balance style and nature within a secure environment. The resort is nestled against the Macalister Range and perched above a lush expanse of greenery. Each home is cocooned within Botanica's environment, with two strikingly designed country clubs located at the centre of the resort.

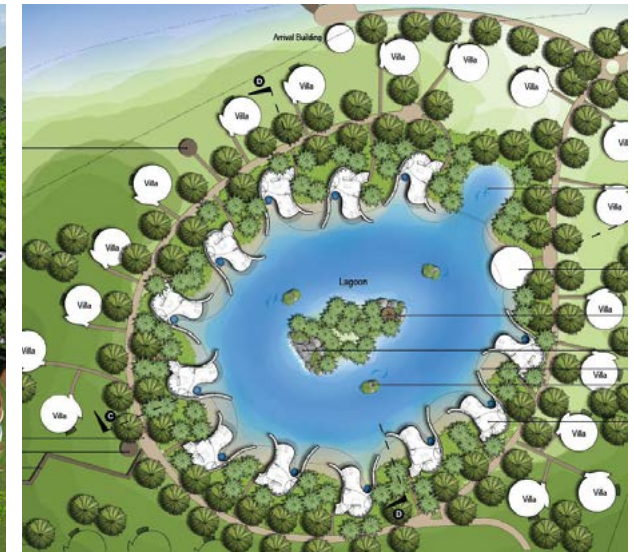
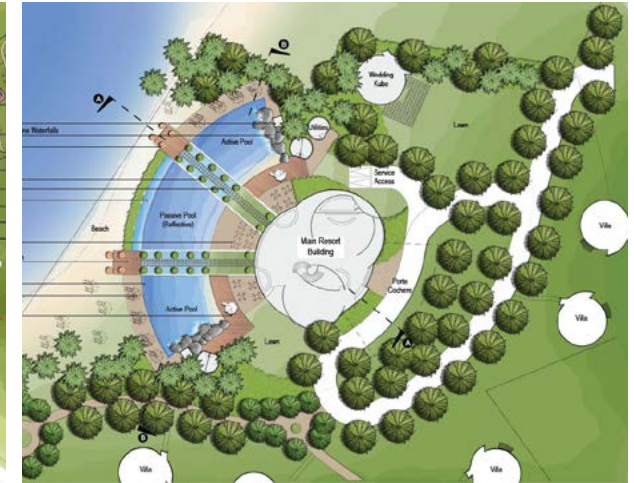
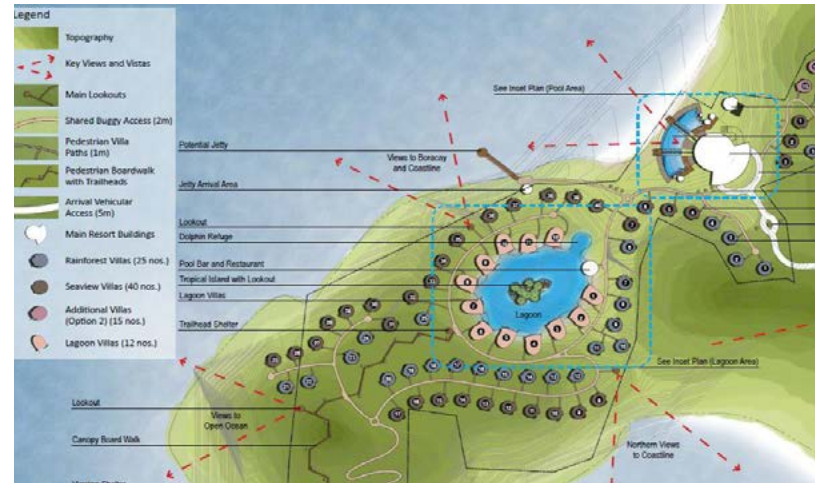
The first stage of the resort is centred around Botanica House which features a dining room, games area, library, cinema, bar and lounge, swimming pool, gym and tennis court. Subsequent stages will include a clubhouse with a wellness centre and heated indoor swimming pool, as well as a bowling green and workshop.



project experience

LIMESTONE POINT RESORT Aklan, Philippines

LA3 has prepared a master plan, site design, pool and water feature design, planting analysis & design and construction advice for this exciting marine-themed resort near Boracay. This exclusive development includes contemporary designed villas developed by the LA3 consortium with Australian Architects CAA + project engineers WSP. The project includes unique elements and design to differentiate itself from the mainstream Boracay market.



project experience

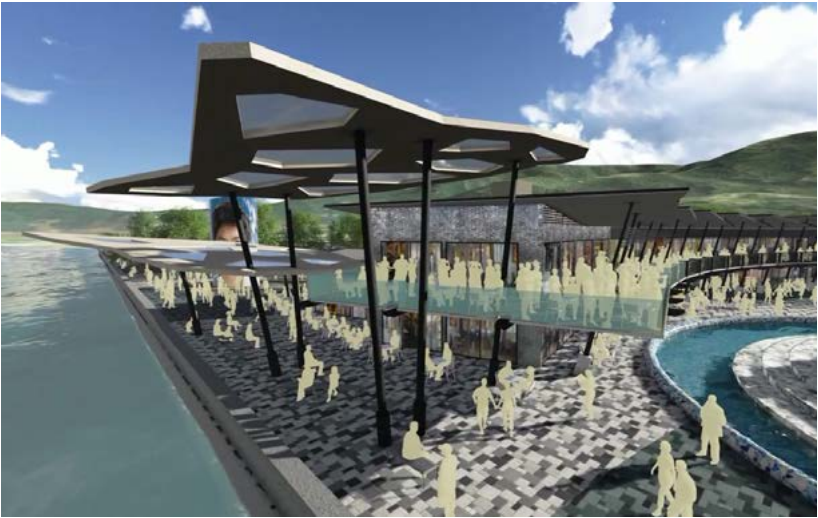


LIMESTONE POINT RESORT
Aklan, Philippines



project experience

JISEPO BAY WATERFRONT Geoje, South Korea



project experience

DUNK ISLAND - THE SPIT BAR Dunk Island, Queensland, Australia





Office Locations:

North Queensland Office
457 Draper Street, Parramatta Park QLD 4870

Central Queensland Office
8 The Crescent, Agnes Water QLD 4677

Postal Address: PO Box 5397, Cairns QLD 4870
T +61 7 4031 3993 E info@LA3.com.au